



**IT'S ALL ABOUT
GETTING THE
JOB DONE!**





General information

- ◆ Company profile, *p7*
- ◆ Contact information, *p11*
- ◆ Online product platform, *p13*
- ◆ List of abbreviations, *p14*
- ◆ Conversion factors, *p15*
- ◆ List of icons, *p16*
- ◆ Certificates, inspection and documents, *p17*
- ◆ Certifications, *p18*
- ◆ Testing, *p19*
- ◆ General warning & applications, *p21*

Sockets

- ◆ Open wedge socket with pin, *p28*
- ◆ Open wedge socket with safety pin, *p29*
- ◆ Fixed-end wedge socket with standard pin, *p30*
- ◆ Fixed-end wedge socket with safety pin, *p31*
- ◆ Open spelter socket with pin, *p32*
- ◆ Open spelter socket with safety pin, *p33*
- ◆ Closed wedge socket, *p34*
- ◆ Closed spelter socket, *p35*
- ◆ CR socket standard, *p36*
- ◆ CR socket DNV & ABS, *p37*
- ◆ CR socket ABNT, *p39*
- ◆ CRX mooring socket, *p41*

Swivel Sockets

- ◆ CRX Rope Swivel socket, *p46*
- ◆ CR Rope Swivel, *p47*
- ◆ Swivel Sockets with Eye or Jaw, *p49*

Swivels

- ◆ Closed Body Swivel Eye Eye, *p56*
- ◆ Closed Body Swivel Jaw Jaw, *p57*
- ◆ Closed Body Swivel Eye Jaw, *p59*
- ◆ CR Chain Swivel, *p60*
- ◆ CRX Mooring Swivel, *p61*
- ◆ Heavy duty swivel Eye Eye 9,5 - 150 tons, *p62*
- ◆ Heavy duty swivel Eye Eye 200 - 1750 tons, *p63*
- ◆ Heavy duty swivel Jaw Jaw 9,5 - 150 tons, *p64*
- ◆ Heavy duty swivel Jaw Jaw 200 - 1750 tons, *p65*
- ◆ Ballweight, *p66*
- ◆ Ballweight cylinder single and double hook, *p67*

Hook blocks for overhead travelling cranes

- ◆ Hook blocks for overhead travelling cranes, *p73*
- ◆ 1 and 2 sheave(s) overhead travelling crane, *p74*
- ◆ 4 and 6 sheaves overhead travelling crane, *p75*

Hook blocks

- ◆ Hook blocks standard reeve, *p83*
- ◆ Standard reeve block 1 sheave, *p84*
- ◆ Standard reeve block 3 sheaves, *p85*
- ◆ Hook blocks speed reeve, *p87*
- ◆ Hook blocks speed reeve 1 and 3 sheave(s), *p88*
- ◆ Hook blocks speed reeve 5 and 7 sheaves, *p89*
- ◆ Shipboard crane block 1 sheave, *p90*
- ◆ Shipboard crane block 2 sheaves, *p91*
- ◆ Twin hook blocks, *p93*

Hooks

- ◆ Single hooks & double hooks, *p99*

Sheaves

- ◆ Sheaves, *p105*
- ◆ Sheave KG and SG, *p106*
- ◆ Sheave MG, *p107*
- ◆ Vertical lead sheave, *p108*
- ◆ Horizontal lead sheave, *p109*

General products

- ◆ HD Turnbuckle Eye Eye, *p114*
- ◆ HD Turnbuckle Jaw Jaw, *p115*
- ◆ HD Turnbuckle Eye Jaw, *p117*
- ◆ Light type Snatchblock, *p118*
- ◆ Heavy type Snatchblock, *p119*
- ◆ Snatchblock with safety window, *p121*
- ◆ Construction Block with Eye, *p122*
- ◆ Construction Block with Jaw, *p123*
- ◆ Special products, *p125*



GENERAL INFORMATION





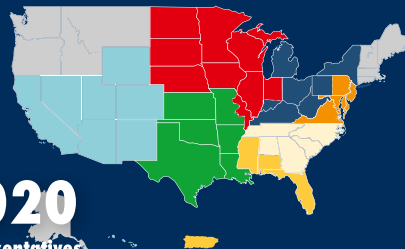
COMPANY PROFILE

Our conditions for optimal performance



2021

Proof loading up
to 6000 Mtons



2020

Representatives
network USA

2015

CRX Mooring swivel
type approved

2008

Supplier of a 2000 tons
lifting block



A WORLDWIDE PARTNER

A leading company: globally active

De Haan Special Equipment is a proactive partner and leader in the field of designing and producing lifting blocks and steel wire sockets. Our organisation supplies products worldwide to the major manufacturers in the crane industry and to various companies in the offshore business. Lifting blocks from De Haan Special Equipment are used for port, ship, factory and mobile cranes. Our steel wire sockets are mainly used in the offshore industry.

First-class performance, from design to delivery

De Haan Special Equipment guarantees first-class performance from design up to delivery, regardless of whether it concerns standardised products or custom-designed specials.

Our innovative engineering department collaborates with other departments and the customer when designing new products and preparing them for production. Furthermore, existing products are examined with a critical eye and adjusted according to the most recent technical developments, if required.

De Haan Special Equipment operates its own production facility where our expert production team machines and assembles all of our products and components. The production process has been set up flexibly to be able to react quickly to specific customer requirements.

Certification



Lloyd's
Register



De Haan Special Equipment is ISO 9001:2015 certified. We have also been awarded certification by GSI/SLV, an internationally accredited welding certification agency, as a producer that is capable of guaranteeing technically high-quality welding constructions.



This certification and our extensive product range are the ultimate proof of your choice of a highly professional partner when you engage De Haan Special Equipment.

All our products are made or handled with the greatest care and attention by our dedicated team of employees, always putting quality and safety first.

Test facilities

De Haan Special Equipment guarantees you high-quality products. If required, we can subject products to test loads at our production facility. Further test possibilities may consist of non-destructive (ultrasonic and/or magnetic) inspection.

If required, these tests and inspections can be performed under the supervision of an official certification authority such as DNV, LR, ABS or other third party.

Areas of application

For the crane industry, De Haan Special Equipment produces standard swivels, wire sheaves, lifting blocks and special custom-made lifting blocks. Our product range for the offshore industry is very extensive, ranging from snatch blocks, mooring swivels and turnbuckles to various types of wire sockets. De Haan Special Equipment always has a product available in its range or can design the product according to all customer requirements. Some of our products have a design approval of third parties.

More information

Please contact our sales representatives or visit our website for more information about our product applications and options.



www.dehaan-se.com



1995

Full range of CR Mooring sockets available from stock



1990

OEM supplier and co-maker for several crane manufacturers



1980

Full range of spelter sockets up to 100mm steel wire rope from stock



1975

Loading offshore hookblocks



1960

Lifting products for shipping industry

1898

Foundation
De Haan Natural
Rope Factory



The current De Haan Special Equipment BV originated in 1898 as a rope yard in the northern Dutch village of Musselkanaal. Our company specialized in manufacturing rope according to traditional methods. Our success factor was the company's site on the Groningen-Ter Apel canal, used at the time for transporting peat from the bogs.

In later years the rope yard's product range was expanded by adding attachment materials and other equipment. Thanks to employee specialization, the development of the machinery, and the growth of the production capacity, the company has become a global player in the area of pulley blocks and steel wire end fittings for the offshore and onshore industry.

Contact information

Can we be of service? If so, please do not hesitate to contact us.

Visiting address

Transistorweg 3
9503 GT Stadskanaal
The Netherlands

Mailing address

P.O. box 4
9500 AA Stadskanaal
The Netherlands

T: +31 599 613 300
sales@dehaan-se.com
www.dehaan-se.com

Trade Register: 02045016
VAT-nr: NL 00.66.31.666.B01

ABN-AMRO BANK

Account number: 41.84.82.993
IBAN: NL06ABNA0418482993
BIC: ABNANL2A



De Haan SE takes great care to ensure that the information in this catalog is reliable and up-to-date. However, it cannot guarantee that it contains no errors, is current and complete at all times. No rights may be derived from the information in this folder. Also, De Haan SE accepts no liability for any damage that is the result of any inaccurate or missing information, nor for any damage that is the result of problems caused by, or that are inherent in, distributing information by ways of copies, the internet or electronically.

Without the express prior written permission from De Haan SE, the content may not be used for any other purposes, including, but not limited to, its multiplication and/or publication or dissemination to third parties, for commercial purposes or otherwise.



VISIT OUR ONLINE PRODUCT PLATFORM

You will find all products and current product data on our online product platform. You can place your orders easily via the digital quotation request. Our commercial department will then contact you and provide you with the information you require.

Explore our product platform at www.dehaan-se.com



OUR CONDITIONS FOR OPTIMAL PERFORMANCE





LIST OF ABBREVIATIONS

| | |
|-------------|---|
| " | Inches |
| ABNT | Associação Brasileira de Normas Técnicas |
| ABS | American Bureau of Shipping |
| BV | Bureau Veritas |
| C | Celsius |
| cc | Cubic centimeter |
| CCS | China Class Society |
| DIN | Deutsches Institut für Normung |
| DNV | Det Norske Veritas |
| EN | European norm |
| F | Fahrenheit |
| ILO | International Labour Organization |
| ISO | International Organization of Standardization |
| kg | Kilogram |
| kN | Kilonewton |
| LBS | Lbs/Pounds |
| LRS | Lloyds Register Society |
| LTM | Long Term Mooring |
| MBL | Minimum Break Load |
| mm | Millimeter |
| NDT | Non-destructive testing |
| NEN | Netherlands Standardization Institute |
| NRS | Non-rotating stopper |
| PL | Proof Load |
| RMRS | Russian Maritime Register of Shipping |
| ROV | Remotely Operated Vehicle |
| SHT | Short tons |
| SWL | Safe Working Load |
| WLL | Working Load Limit |

| To convert from: | To: | Multiply by: |
|------------------|-----|--------------|
|------------------|-----|--------------|

Length

| | | |
|----------------|----------------|---------|
| mm | inch | 0.03937 |
| inch | mm | 25.4 |
| m | foot (12 inch) | 3.28084 |
| foot (12 inch) | m | 0.3048 |

Volume

| | | |
|-----------------------|-----------------------|----------|
| cc (cm ³) | ci (in ³) | 0.06102 |
| ci (in ³) | cc (cm ³) | 16.38706 |

Mass

| | | |
|----------------------|----------------------|-----------|
| metric tons | pounds | 204.62262 |
| pounds | metric tons | 0.00045 |
| pounds | kilogram | 0.45359 |
| kilogram | pounds | 2.20462 |
| US tons (short tons) | metric tons | 0.90718 |
| metric tons | US tons (short tons) | 1.10231 |
| metric tons | kilogram | 1000 |
| kilogram | metric tons | 0.001 |
| metric tons | kilonewton | 9.80665 |
| kilonewton | metric tons | 0.10197 |
| kips | kilonewton | 4.44822 |
| kilonewton | kips | 0.22481 |

Torque

| | | |
|------------------|------------------|---------|
| Newton meter | foot pound-force | 0.73756 |
| foot pound-force | Newton meter | 1.35582 |

Temperature

| | | |
|-----------------|-----------------|------------------------|
| Celsius (Tc) | Fahrenheit (Tf) | $(Tc \times 1.8) + 32$ |
| Fahrenheit (Tf) | Celsius (Tc) | $(Tf - 32) / 1.8$ |



LIST OF ICONS

SWL/WLL

Working Load Limit (or Safe Working Load); the maximum load the relevant product is allowed to lift.



Number of sheaves

The number of sheaves per product. This can be a standard amount or one available upon request.



Size of wire

The size of the wire is relevant for the groove and the diameter (D/d-ratio) of the sheaves.



Type of hook

Hooks are available in single or double version.



Size of hook



Crane type

The crane type is decisive in selecting the pulley block. We advise you on the right product to fit your crane type.



Color code

Color code expressed in RAL values.



Lifting class



Type of bearing

Type of bearing; roller or bronze.



Groove hardness

Groove hardness to be realized to meet your needs.



Painting system

System customized to the customer's requirements.



Heat protection shield

Available upon request along with your product in order to protect the structure from high temperatures.



Hook locking device

Available upon request in order to prevent the hook from twisting. Can be programmed to four times 90°.



Wrap angle

The angle between the incoming and outgoing wire.



Connection to construction

Connection to construction; bolted or welded.



Line pull (tons)

Line pull of single line.



Dead-end becket

Connector for wire rope end-fitting.



Own weight

The product's own weight.



Reevings

Reeving with or without releasing the end-fitting.



Outside dimensions



Groove size

Size of the groove depends on the wire diameter required.



Non-rotating system

The NRS prevents the tangle in the cone from turning during transport or installation.



Underwater use

Also available for underwater use.



Also available with shackle



De Haan SE products are available with several types of applicable certifications.

We are approved manufacturer for different type of products by several classification societies.

For special products we can arrange third-party design approvals/reviews on request.

On request we can deliver our products with the following certificates and inspections:

- ◆ Certificate of Conformity
- ◆ Certificate of Origin
- ◆ Material Certificate in accordance with EN 10204 - 3.1 or 3.2
- ◆ Manufacturer Certificate
- ◆ Load test Certificate
- ◆ NDT inspection, Magnetic Particle Inspection (M.P.I.) and Ultrasonic Inspection (U.S.)
Hardness Measurement Inspection
- ◆ Classification Society Inspection Certificate
- ◆ Design Approval Certificate
- ◆ FEA strength and fatigue calculations
- ◆ Dimensional Inspection Report
- ◆ Production Part Approval Process (PPAP) Report/First Article Report
- ◆ Certificate for wooden packaging (IPPC stamp)
- ◆ Layer Thickness Control Reports
- ◆ Fabrication Book
- ◆ Inspection and Test Plan (ITP) on projects

Please ask our sales team for the costs of the certificates and applicable certification for each product type.

MANUFACTURING CERTIFICATES



- ◆ Approved manufacturer of Steel Wire Ropes
- ◆ Approved manufacturer of forged chain cable accessoires



- ◆ Certificate of Re-Marking
- ◆ ISO 3834-2:2005
- ◆ ISO 9001:2015



- ◆ Certificate of Renewal



- ◆ DIN 18800-7:2008-11
- ◆ Welding Certificate



- ◆ JQS Certificate of Qualification



- ◆ LEEA Certificate of Membership



- ◆ Manufacturing Assessment Hook(blocks), mooring sockets & swivels



- ◆ RINA Workshop Approval

TYPE APPROVALS



- ◆ Type Approval Swivels
- ◆ Type Approval ST-0378 OSS+CSS+CR Sockets
- ◆ Type Approval Offshore Mooring Steel Wire CR Sockets



- ◆ Mooring Swivel CRX 2+2,5+3+3,5+4 Inch R5
- ◆ Mooring Swivel CRX 2+2,5+3+3,5+4 Inch R4
- ◆ Mooring Socket CR 512-540 Material Grade ASTM 487 Grade Q10



- ◆ Mooring Socket CR 512-540

Testing according ILO (see below) or other third party requirements. Strength and fatigue calculation of test load on request.

Every item of loose gear is to be tested and thoroughly examined before being put into use for the first time and after any substantial alternation or repair to any part liable to affect its safety. The test loads to be applied shall be in accordance with the following table:

| Item | Test load |
|--|---------------------|
| Single sheave blocks (see Note 1) | 4 x SWL (line pull) |
| Multi sheave blocks (see Note 2) | |
| SWL ≤ 25 tons | 2 x SWL |
| 25 tons < SWL ≤ 160 tons | (0.933 x SWL) + 27 |
| SWL > 160 tons | 1.1 x SWL |
| Ballweights, hooks, turnbuckles & swivels | |
| SWL ≤ 25 tons | 2 x SWL |
| SWL > 25 tons | (1.22 x SWL) + 20 |
| Sockets (see Note 3) | PL 40% of the MBL |

Notes

- Note 1. The SWL for a single sheave block, including single sheave blocks with beackets, is to be taken as one half of the resultant load on the head fitting.
- Note 2. The SWL of a multi-sheave block is to be taken as the resultant load on the head fitting.
- Note 3. Sockets are proof loaded at 40% of the MBL up to an MBL of 875 Mtons.





Introduction

This warning and application is meant for all products manufactured by 'De Haan Special Equipment B.V.' The purchaser or end-user is responsible for proper and safe use of the product. Also the responsibility for the use of the products rests with the end-user. For each product type, 'De Haan Special Equipment B.V.' supplies a 'Maintenance manual'. To avoid misunderstanding, the certain terms, used in this 'warning and application', should always be the same.

Warning notices

The terms DANGER and WARNING used in this Application, are ment for all who are using or are in close contact with our products, in order to alert them to the potential danger.

Warning sign

Signal word

Explanation

| | | |
|---|---------|---|
|  | Danger | Indicates a hazardous situation that death or serious injury will result if it is not avoided. |
|  | Warning | Indicates a hazardous situation that death or serious injury could result if it is not avoided. |

Further information

The term Information, used in this manual is for all persons who work with or nearby the products, to draw attention to useful information and tips.

Sign

Signal word

Explanation

| | | |
|---|-------------|---------------------------------------|
|  | Information | Indicates useful information and tips |
|---|-------------|---------------------------------------|

For product specific warning and applications, please contact us and/or see our website.



DANGER



Risk of death due to improper handling!

Incorrect operation of products can result in death or serious injury!

- ◆ Only authorized or qualified personnel are permitted to work with our products!



- ◆ All the technical information, delivered with the products, for example Instructions or additions to the manual, must be observed.
-

Failure

Failure of the product can occur due to improper use or misapplication.

Improper maintenance also poses a risk of failure.

Failure of the product can result in falling or damaged load, which can result in serious injury or even death.

For repairs, the owner or user should contact De Haan Special Equipment B.V.

Tel. +31 599 613 300

sales@dehaan-se.com

Working Load Limit

The 'working load limit', which is stamped on each product, may never be exceeded.

Overloading of this WLL can result in serious injury or even death.

Maintenance

Each product is delivered with a 'Maintenance Manual', which describes the inspection and maintenance, as well as the frequency of these. The frequency of inspection and lubrication depends upon frequency of use, period of product use as well as environmental conditions and the good judgment of the user.

Not following these guidelines, can result in failure of the product.

Warnings

The following warnings are similar for all the products. Specific warnings for products, are described in the Maintenance Manual for each product type.

- ◆ Side load must be avoided
- ◆ Load must be applied gradually
- ◆ Welding on products is not allowed without written permission
- ◆ Keep hands and body away from movable parts during lifting
- ◆ Personal should wear proper safety gear in or areas near where loads are moved or supported
- ◆ **The importer in North America is responsible for informing the users of the handling and safety instructions.**

SOCKETS







**Open wedge socket
with pin**

◆ P28



**Open wedge socket
with safety pin**

◆ P29



**Fixed-End wedge socket
with standard pin**

◆ P30



**Fixed-end wedge socket
with safety pin**

◆ P31



**Open spelter socket
with pin**

◆ P32



**Open spelter socket
with safety pin**

◆ P33



**Closed wedge
socket**

◆ P34



**Closed spelter
socket**

◆ P35



CR socket standard

◆ P36



CR socket DNV & ABS

◆ P37



CR socket ABNT

◆ P39



CRX mooring socket

◆ P41



Application information

Sockets attached to steel wire rope are used for lifting, anchoring systems, anchor cables of oil platforms, towing cables, or for fastening cables for construction purposes such as bridges or roof constructions. Sockets are the strongest steel wire rope end fittings available and if assembled in the proper way, can at minimum meet the breaking strength of the steel wire rope.

Spelter & CR Sockets

Our open and closed spelter sockets and wedge sockets are used for lifting, rigging, towing, and constructions. The CR sockets are used in anchor lines for temporary mooring between the chain and wire rope. Permanent Mooring System (PMS) and Long Term Mooring (LTM) sockets are made of forged steel and used in permanent mooring lines.

Instructions for use

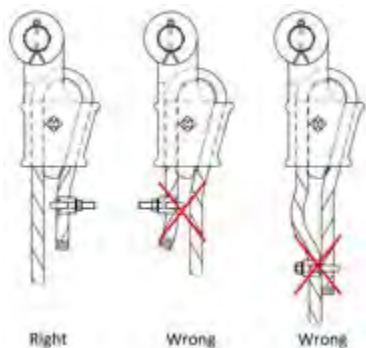
Standard pins are normally used in non-permanent and pick and place applications. Safety pins are used for more permanent applications or where the load may slide on the pin, causing rotation of the pin.

Resin: Before use please read the resin manufacturer's instructions carefully. In case of incorrect use of the resin, our spelter material can result in an unsafe termination. More information can also be obtained from your wire rope supplier. Always clean dirt and grease from the wire rope broom and socket basket. Make certain that the broomed wires are evenly spaced in the basket and that the wire and basket are aligned with one another.

White metal or zinc: When using white metal or zinc, do not preheat the socket to more than 300°C (570 °F). Never shock load a socket. Sockets may not be heated as this may affect their Working Load Limit. Never use an assembly before the resin is fully hardened. Socketing should always be done by a qualified individual.

Wedge sockets

Always mount the loaded part of the wire in the center line of the pin (see figures). Secure the dead end with a wire rope clip. Do not attach the loaded wire to the dead end. The dead end should have a length of 6 times the wire diameter with a minimum of 150 mm. After the first load, inspect that the wire rope and wedge are fully seated. The load may slip if the connection is not properly installed. Inspect the connection regularly.



V052301

| Wire diameter | Wire diameter | ± Resin volume | ± Resin volume |
|---------------|---------------|----------------|----------------|
| mm | inch | cc | ci |
| 6-7 | ¼ | 10 | 0.61 |
| 8-10 | ⅜ | 20 | 1.2 |
| 11-13 | ½ | 30 | 1.8 |
| 14-16 | ⅝ | 50 | 3.1 |
| 17-19 | ¾ | 80 | 4.9 |
| 20-22 | 7/8 | 100 | 6.1 |
| 23-26 | 1 | 170 | 10 |
| 27-30 | 1⅛ | 250 | 15 |
| 31-36 | 1¼-1⅜ | 310 | 19 |
| 37-39 | 1½ | 420 | 26 |
| 40-42 | 1⅝ | 470 | 29 |
| 43-48 | 1¾-1⅞ | 760 | 46 |
| 49-54 | 2-2⅛ | 1050 | 64 |
| 55-60 | 2¼-2⅜ | 1450 | 88 |
| 61-68 | 2½-2⅝ | 2100 | 128 |
| 69-75 | 2¾-2⅞ | 2750 | 168 |
| 76-80 | 3-3⅜ | 3600 | 220 |
| 81-86 | 3¼-3⅝ | 4500 | 275 |
| 87-93 | 3½-3⅞ | 5500 | 336 |
| 94-102 | 3¾-4 | 7000 | 427 |
| 108-115 | 4½ | 12000 | 732 |
| 122-130 | 5 | 15000 | 915 |
| 140-144 | 5½-6 | 23500 | 1434 |
| 158-167 | 6½ | 30000 | 1831 |

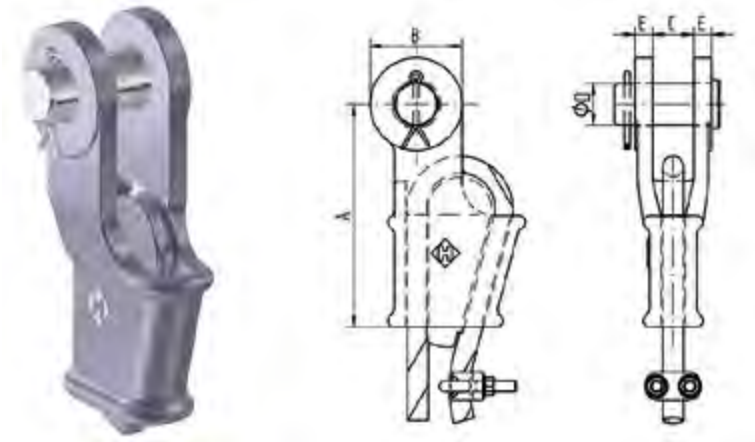
www.dehaan-se.com ♦ 27



OPEN WEDGE SOCKET WITH PIN

| | | |
|------------------------|---|--|
| Material | : | Cast steel |
| Working Load Limit | : | 20% of the MBL |
| Finish | : | Painted or Galvanised (< Type No. 6 standard galvanised) |
| Temperature Range | : | -40 °C up to +200 °C |
| Standard Certification | : | Certificate of Conformity 3.1 material certificate EN 10204 |

Non-standard sizes or custom products available on request.



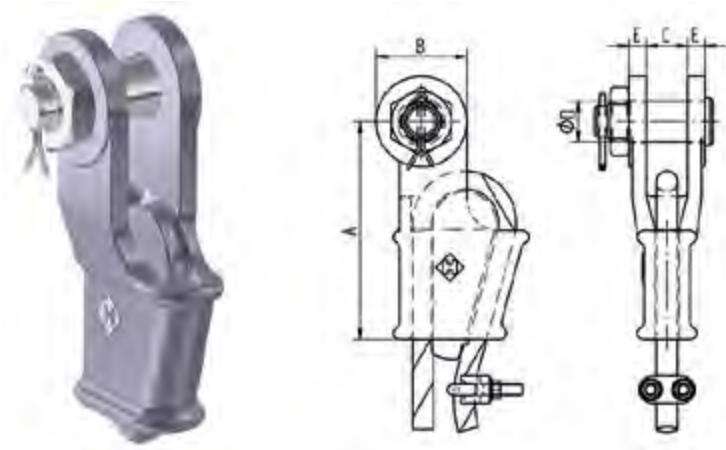
| NR. | Rope Ø | Article number | | MBL | A | B | C | ØD | E | Weight |
|-----|--------|---------------------------|------------|-----|------|-----|------|-----|----|--------|
| | mm | painteds RAL 5013 blue | galvanised | | | | | | | |
| 0.5 | 9-10 | - | OWSP0,5G | 10 | 146 | 47 | 20,5 | 20 | 11 | 1,7 |
| 1 | 11-13 | - | OWSP1G | 16 | 146 | 57 | 25,5 | 25 | 12 | 2,3 |
| 2 | 14-16 | - | OWSP2G | 25 | 176 | 70 | 32 | 30 | 14 | 3,9 |
| 3 | 17-19 | - | OWSP3G | 32 | 212 | 80 | 38 | 35 | 16 | 6,1 |
| 4 | 20-22 | - | OWSP4G | 45 | 240 | 96 | 44 | 41 | 19 | 9,3 |
| 5 | 23-26 | - | OWSP5G | 70 | 274 | 114 | 51 | 51 | 22 | 14,8 |
| 6 | 27-29 | OWSP6P | OWSP6G | 100 | 310 | 130 | 57 | 57 | 25 | 21,1 |
| 7 | 30-33 | OWSP7P | OWSP7G | 110 | 350 | 146 | 63 | 63 | 28 | 32,8 |
| 8 | 34-36 | OWSP8P | OWSP8G | 125 | 400 | 148 | 69 | 63 | 28 | 39,3 |
| 9 | 37-40 | OWSP9P | OWSP9G | 150 | 450 | 160 | 76 | 70 | 30 | 52,5 |
| 10 | 41-43 | OWSP10P | OWSP10G | 200 | 500 | 174 | 76 | 76 | 33 | 67,5 |
| 11 | 44-48 | OWSP11P | OWSP11G | 260 | 550 | 200 | 89 | 89 | 39 | 98,2 |
| 12 | 49-53 | OWSP12P | OWSP12G | 280 | 650 | 200 | 101 | 95 | 46 | 122,5 |
| 13 | 56 | OWSP13P | OWSP13G | 360 | 660 | 250 | 113 | 108 | 53 | 178,4 |
| 14 | 63 | OWSP14P | OWSP14G | 450 | 840 | 270 | 127 | 121 | 60 | 281 |
| 15 | 75 | OWSP15P | OWSP15G | 520 | 1000 | 300 | 146 | 133 | 76 | 469 |
| 16 | 81-86 | OWSP16P | OWSP16G | 625 | 1100 | 300 | 159 | 140 | 79 | 610 |

OPEN WEDGE SOCKET WITH SAFETY PIN



| | | |
|------------------------|---|--|
| Material | : | Cast steel |
| Working Load Limit | : | 20% of the MBL |
| Finish | : | Painted or galvanised (< Type no. 6 standard galvanised) |
| Temperature Range | : | -40 °C up to +200 °C |
| Standard Certification | : | Certificate of Conformity 3.1 material certificate EN 10204 |

Non-standard sizes or custom products available on request.



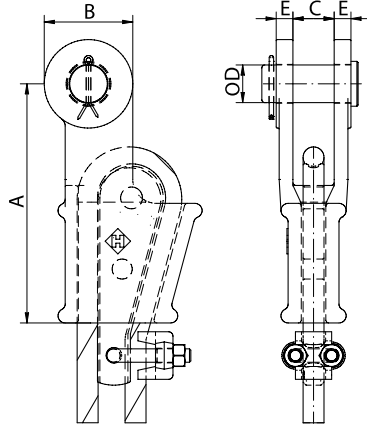
| NR. | Rope Ø | Article number | | MBL | A | B | C | ØD | E | Weight |
|-----|---------|------------------------|------------|------|------|-----|------|-----|----|--------|
| | mm | paint RAL 5013 blue | galvanised | tons | mm | | | | | kg ± |
| 0.5 | 9 - 10 | - | OWSB0,5G | 10 | 146 | 47 | 20,5 | 20 | 11 | 1,7 |
| 1 | 11 - 13 | - | OWSB1G | 16 | 146 | 57 | 25,5 | 20 | 12 | 2,3 |
| 2 | 14 - 16 | - | OWSB2G | 25 | 176 | 70 | 32 | 30 | 14 | 3,9 |
| 3 | 17 - 19 | - | OWSB3G | 32 | 212 | 80 | 38 | 35 | 16 | 6,1 |
| 4 | 20 - 22 | - | OWSB4G | 45 | 240 | 96 | 44 | 41 | 19 | 9,3 |
| 5 | 23 - 26 | - | OWSB5G | 70 | 274 | 114 | 51 | 51 | 22 | 14,8 |
| 6 | 27 - 29 | OWSB6P | OWSB6G | 100 | 310 | 130 | 57 | 57 | 25 | 21,1 |
| 7 | 30 - 33 | OWSB7P | OWSB7G | 110 | 350 | 146 | 63 | 63 | 28 | 32,8 |
| 8 | 34 - 36 | OWSB8P | OWSB8G | 125 | 400 | 148 | 69 | 63 | 28 | 39,3 |
| 9 | 37 - 40 | OWSB9P | OWSB9G | 150 | 450 | 160 | 76 | 70 | 30 | 52,5 |
| 10 | 41 - 43 | OWSB10P | OWSB10G | 200 | 500 | 174 | 76 | 76 | 33 | 67,5 |
| 11 | 44 - 48 | OWSB11P | OWSB11G | 260 | 550 | 200 | 89 | 89 | 39 | 98,2 |
| 12 | 49 - 53 | OWSB12P | OWSB12G | 280 | 650 | 200 | 101 | 95 | 46 | 122,5 |
| 13 | 56 | OWSB13P | OWSB13G | 360 | 660 | 250 | 113 | 108 | 53 | 178,4 |
| 14 | 63 | OWSB14P | OWSB14G | 450 | 840 | 270 | 127 | 121 | 60 | 281 |
| 15 | 75 | OWSB15P | OWSB15G | 520 | 1000 | 300 | 146 | 133 | 76 | 469 |
| 16 | 81 - 86 | OWSB16P | OWSB16G | 625 | 1100 | 300 | 159 | 140 | 79 | 630 |



FIXED-END WEDGE SOCKET WITH STANDARD PIN

| | | |
|------------------------|---|--|
| Material | : | Cast steel |
| Working Load Limit | : | 20% of the MBL |
| Finish | : | Painted or Galvanised (< Type No. 6 standard galvanised) |
| Temperature Range | : | -40 °C up to +200 °C |
| Standard Certification | : | Certificate of Conformity 3.1 material certificate EN 10204 |

**Non-standard sizes or custom products available on request.
Including Wire Rope Clip.**



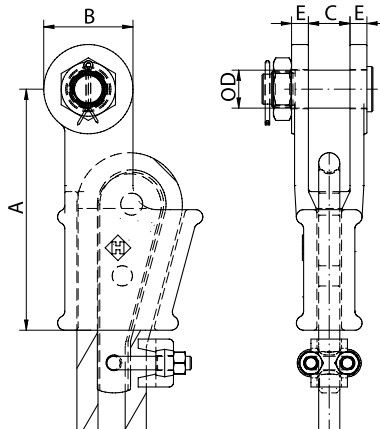
| NR. | Rope Ø | Article number | | MBL | A | B | C | ØD | E | Weight |
|-----|--------|------------------------|------------|------|------|-----|------|-----|----|--------|
| | mm | paint RAL 5013 blue | galvanised | tons | mm | | | | | kg ± |
| 0.5 | 9-10 | - | FOWSP0,5G | 10 | 146 | 47 | 20,5 | 20 | 11 | 1,7 |
| 1 | 11-13 | - | FOWSP1G | 16 | 146 | 57 | 25,5 | 25 | 12 | 2,3 |
| 2 | 14-16 | - | FOWSP2G | 25 | 176 | 70 | 32 | 30 | 14 | 3,9 |
| 3 | 17-19 | - | FOWSP3G | 32 | 212 | 80 | 38 | 35 | 16 | 6,1 |
| 4 | 20-22 | - | FOWSP4G | 45 | 240 | 96 | 44 | 41 | 19 | 9,3 |
| 5 | 23-26 | - | FOWSP5G | 70 | 274 | 114 | 51 | 51 | 22 | 14,8 |
| 6 | 27-29 | FOWSP6P | FOWSP6G | 100 | 310 | 130 | 57 | 57 | 25 | 21,1 |
| 7 | 30-33 | FOWSP7P | FOWSP7G | 110 | 350 | 146 | 63 | 63 | 28 | 32,8 |
| 8 | 34-36 | FOWSP8P | FOWSP8G | 125 | 400 | 148 | 69 | 63 | 28 | 39,3 |
| 9 | 37-40 | FOWSP9P | FOWSP9G | 150 | 450 | 160 | 76 | 70 | 30 | 52,5 |
| 10 | 41-43 | FOWSP10P | FOWSP10G | 200 | 500 | 174 | 76 | 76 | 33 | 67,5 |
| 11 | 44-48 | FOWSP11P | FOWSP11G | 260 | 550 | 200 | 89 | 89 | 39 | 98,2 |
| 12 | 49-53 | FOWSP12P | FOWSP12G | 280 | 650 | 200 | 101 | 95 | 46 | 122,5 |
| 13 | 56 | FOWSP13P | FOWSP13G | 360 | 660 | 250 | 113 | 108 | 53 | 178,4 |
| 14 | 63 | FOWSP14P | FOWSP14G | 450 | 840 | 270 | 127 | 121 | 60 | 281 |
| 15 | 75 | FOWSP15P | FOWSP15G | 520 | 1000 | 300 | 146 | 133 | 76 | 469 |
| 16 | 81-86 | FOWSP16P | FOWSP16G | 625 | 1100 | 300 | 159 | 140 | 79 | 610 |

FIXED-END WEDGE SOCKET WITH SAFETY PIN



| | | |
|------------------------|---|--|
| Material | : | Cast steel |
| Working Load Limit | : | 20% of the MBL |
| Finish | : | Painted or galvanised (< Type no. 6 standard galvanised) |
| Temperature Range | : | -40 °C up to +200 °C |
| Standard Certification | : | Certificate of Conformity 3.1 material certificate EN 10204 |

**Non-standard sizes or custom products available on request.
Including Wire Rope Clip.**



| NR. | Rope Ø | Article number | | MBL | A | B | C | ØD | E | Weight |
|-----|---------|------------------------|------------|------|------|-----|------|-----|----|--------|
| | mm | paint RAL 5013 blue | galvanised | tons | mm | | | | | kg ± |
| 0.5 | 9 - 10 | - | FOWSB0,5G | 10 | 146 | 47 | 20,5 | 20 | 11 | 1,7 |
| 1 | 11 - 13 | - | FOWSB1G | 16 | 146 | 57 | 25,5 | 20 | 12 | 2,3 |
| 2 | 14 - 16 | - | FOWSB2G | 25 | 176 | 70 | 32 | 30 | 14 | 3,9 |
| 3 | 17 - 19 | - | FOWSB3G | 32 | 212 | 80 | 38 | 35 | 16 | 6,1 |
| 4 | 20 - 22 | - | FOWSB4G | 45 | 240 | 96 | 44 | 41 | 19 | 9,3 |
| 5 | 23 - 26 | - | FOWSB5G | 70 | 274 | 114 | 51 | 51 | 22 | 14,8 |
| 6 | 27 - 29 | FOWSB6P | FOWSB6G | 100 | 310 | 130 | 57 | 57 | 25 | 21,1 |
| 7 | 30 - 33 | FOWSB7P | FOWSB7G | 110 | 350 | 146 | 63 | 63 | 28 | 32,8 |
| 8 | 34 - 36 | FOWSB8P | FOWSB8G | 125 | 400 | 148 | 69 | 63 | 28 | 39,3 |
| 9 | 37 - 40 | FOWSB9P | FOWSB9G | 150 | 450 | 160 | 76 | 70 | 30 | 52,5 |
| 10 | 41 - 43 | FOWSB10P | FOWSB10G | 200 | 500 | 174 | 76 | 76 | 33 | 67,5 |
| 11 | 44 - 48 | FOWSB11P | FOWSB11G | 260 | 550 | 200 | 89 | 89 | 39 | 98,2 |
| 12 | 49 - 53 | FOWSB12P | FOWSB12G | 280 | 650 | 200 | 101 | 95 | 46 | 122,5 |
| 13 | 56 | FOWSB13P | FOWSB13G | 360 | 660 | 250 | 113 | 108 | 53 | 178,4 |
| 14 | 63 | FOWSB14P | FOWSB14G | 450 | 840 | 270 | 127 | 121 | 60 | 281 |
| 15 | 75 | FOWSB15P | FOWSB15G | 520 | 1000 | 300 | 146 | 133 | 76 | 469 |
| 16 | 81 - 86 | FOWSB16P | FOWSB16G | 625 | 1100 | 300 | 159 | 140 | 79 | 630 |



OPEN SPELTER SOCKET WITH PIN

| | | |
|------------------------|---|--|
| Material | : | Cast steel |
| Working Load Limit | : | 20% of the MBL |
| Finish | : | Painted or galvanised (< Type No. 100 standard galvanised) |
| Temperature Range | : | -40 °C up to +200 °C |
| Standard Certification | : | Certificate of Conformity 3.1 material certificate EN 10204 |

TYPE APPROVED PRODUCT

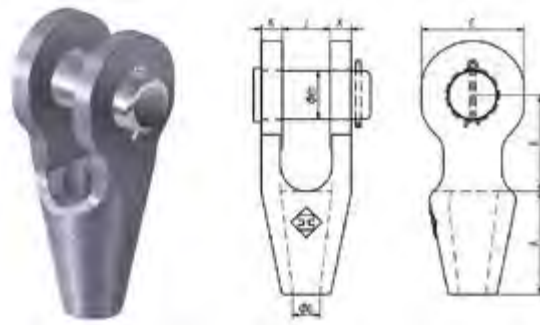


Sockets are Type Approved by DNV according DNV ST-0378



These sockets include our non-rotating system (NRS-system) which prevents the tump from turning or slipping out of the cone and guarantees a high performance connection.

Non-standard sizes or custom products available on request.



| NR. | Rope Ø | Article number | | MBL | A | B | C | ØD | ØD1 | J | K | Weight |
|-----|-----------|---------------------------|------------|------|------|------|-------|------|------|------|-----|--------|
| | mm | painteds RAL 5013 blue | galvanised | tons | mm | | | | | | | kg ± |
| 192 | 6-7 | - | OSSP192G | 8 | 52 | 39,5 | 33,5 | 8 | 17,5 | 17,5 | 8 | 0,4 |
| 194 | 8 - 10 | - | OSSP194G | 12 | 58 | 44,5 | 39,5 | 11 | 20,5 | 20,5 | 11 | 0,8 |
| 196 | 11 - 13 | - | OSSP196G | 20 | 63,5 | 51 | 49 | 14 | 25,5 | 25,5 | 12 | 1,3 |
| 198 | 14 - 16 | - | OSSP198G | 30 | 76,5 | 63,5 | 62 | 17,5 | 30 | 32 | 14 | 2,3 |
| 100 | 17 - 19 | OSSP100P | OSSP100G | 40 | 89 | 76 | 100 | 21 | 35 | 38 | 16 | 3,2 |
| 104 | 20 - 22 | OSSP104P | OSSP104G | 60 | 101 | 89 | 85,5 | 24 | 41 | 44 | 19 | 5 |
| 108 | 23 - 26 | OSSP108P | OSSP108G | 75 | 114 | 101 | 114 | 28 | 51 | 51 | 22 | 8,8 |
| 111 | 27 - 30 | OSSP111P | OSSP111G | 100 | 127 | 114 | 123,5 | 32 | 57 | 57 | 25 | 11,6 |
| 115 | 31 - 36 | OSSP115P | OSSP115G | 125 | 139 | 127 | 135 | 38 | 63 | 63 | 28 | 16,3 |
| 118 | 37 - 39 | OSSP118P | OSSP118G | 150 | 152 | 162 | 152 | 41 | 70 | 76 | 30 | 23,5 |
| 120 | 40 - 42 | OSSP120P | OSSP120G | 180 | 165 | 165 | 168 | 44 | 76 | 76 | 33 | 29 |
| 125 | 43 - 48 | OSSP125P | OSSP125G | 230 | 191 | 178 | 190 | 51 | 89 | 89 | 39 | 45 |
| 128 | 49 - 54 | OSSP128P | OSSP128G | 280 | 216 | 229 | 206 | 57 | 95 | 102 | 45 | 64,5 |
| 130 | 55 - 60 | OSSP130P | OSSP130G | 375 | 229 | 254 | 225 | 63 | 108 | 113 | 53 | 88 |
| 132 | 61 - 68 | OSSP132P | OSSP132G | 425 | 248 | 273 | 251 | 73 | 121 | 127 | 60 | 125 |
| 135 | 69 - 75 | OSSP135P | OSSP135G | 500 | 279 | 279 | 266 | 79 | 127 | 133 | 73 | 162 |
| 138 | 76 - 80 | OSSP138P | OSSP138G | 600 | 305 | 286 | 274 | 86 | 133 | 146 | 76 | 195 |
| 140 | 81 - 86 | OSSP140P | OSSP140G | 700 | 330 | 298 | 286 | 92 | 140 | 159 | 79 | 224 |
| 142 | 87 - 93 | OSSP142P | OSSP142G | 750 | 356 | 318 | 310 | 99 | 152 | 171 | 83 | 280 |
| 144 | 94 - 102 | OSSP144P | OSSP144G | 950 | 381 | 343 | 352 | 108 | 178 | 191 | 89 | 378 |
| 146 | 108 - 115 | OSSP146P | OSSP146G | 1200 | 460 | 480 | 430 | 125 | 190 | 208 | 101 | 564 |
| 150 | 122 - 130 | OSSP150P | OSSP150G | 1400 | 500 | 500 | 550 | 138 | 250 | 210 | 120 | 922 |
| 160 | 140 - 155 | OSSP160P | OSSP160G | 2000 | 580 | 500 | 590 | 160 | 275 | 230 | 140 | 1295 |
| 170 | 158 - 167 | OSSP170P | OSSP170G | 2500 | 675 | 600 | 640 | 175 | 290 | 310 | 160 | 1950 |

OPEN SPELTER SOCKET WITH SAFETY PIN



| | | |
|------------------------|---|--|
| Material | : | Cast steel |
| Working Load Limit | : | 20% of the MBL |
| Finish | : | Painted or galvanised (< Type No. 100 standard galvanised) |
| Temperature Range | : | -40 °C up to +200 °C |
| Standard Certification | : | Certificate of Conformity 3.1 material certificate EN 10204 |

TYPE APPROVED PRODUCT

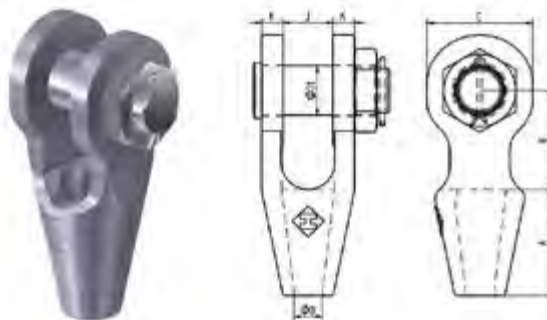


Sockets are Type Approved by DNV according DNV ST-0378



These sockets include our non-rotating system (NRS-system) which prevents the tamp from turning or slipping out of the cone and guarantees a high performance connection.

Non-standard sizes or custom products available on request.



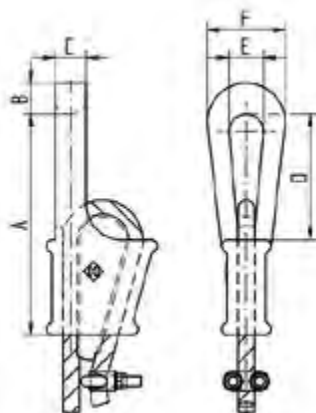
| NR. | Rope Ø | Article number | | MBL | A | B | C | ØD | ØD1 | J | K | Weight |
|-----|-----------|---------------------------|------------|------|------|------|-------|------|------|------|-----|--------|
| | mm | painteds RAL 5013 blue | galvanised | tons | mm | | | | | | | kg ± |
| 192 | 6 - 7 | - | OSSB192G | 8 | 52 | 39,5 | 33,5 | 8 | 17,5 | 17,5 | 8 | 0,4 |
| 194 | 8 - 10 | - | OSSB194G | 12 | 58 | 44,5 | 39,5 | 11 | 20,5 | 20,5 | 11 | 0,8 |
| 196 | 11 - 13 | - | OSSB196G | 20 | 63,5 | 51 | 49 | 14 | 25,5 | 25,5 | 12 | 1,3 |
| 198 | 14 - 16 | - | OSSB198G | 30 | 76,5 | 63,5 | 62 | 17,5 | 30 | 32 | 14 | 2,3 |
| 100 | 17 - 19 | OSSB100P | OSSB100G | 40 | 89 | 76 | 100 | 21 | 35 | 38 | 16 | 3,2 |
| 104 | 20 - 22 | OSSB104P | OSSB104G | 60 | 101 | 89 | 85,5 | 24 | 41 | 44 | 19 | 5 |
| 108 | 23 - 26 | OSSB108P | OSSB108G | 75 | 114 | 101 | 114 | 28 | 51 | 51 | 22 | 8,8 |
| 111 | 27 - 30 | OSSB111P | OSSB111G | 100 | 127 | 114 | 123,5 | 32 | 57 | 57 | 25 | 11,6 |
| 115 | 31 - 36 | OSSB115P | OSSB115G | 125 | 139 | 127 | 135 | 38 | 63 | 63 | 28 | 16,3 |
| 118 | 37 - 39 | OSSB118P | OSSB118G | 150 | 152 | 162 | 152 | 41 | 70 | 76 | 30 | 23,5 |
| 120 | 40 - 42 | OSSB120P | OSSB120G | 180 | 165 | 165 | 168 | 44 | 76 | 76 | 33 | 29 |
| 125 | 43 - 48 | OSSB125P | OSSB125G | 230 | 191 | 178 | 190 | 51 | 89 | 89 | 39 | 45 |
| 128 | 49 - 54 | OSSB128P | OSSB128G | 280 | 216 | 229 | 206 | 57 | 95 | 102 | 45 | 64,5 |
| 130 | 55 - 60 | OSSB130P | OSSB130G | 375 | 229 | 254 | 225 | 63 | 108 | 113 | 53 | 88 |
| 132 | 61 - 68 | OSSB132P | OSSB132G | 425 | 248 | 273 | 251 | 73 | 121 | 127 | 60 | 125 |
| 135 | 69 - 75 | OSSB135P | OSSB135G | 500 | 279 | 279 | 266 | 79 | 127 | 133 | 73 | 162 |
| 138 | 76 - 80 | OSSB138P | OSSB138G | 600 | 305 | 286 | 274 | 86 | 133 | 146 | 76 | 195 |
| 140 | 81 - 86 | OSSB140P | OSSB140G | 700 | 330 | 298 | 286 | 92 | 140 | 159 | 79 | 224 |
| 142 | 87 - 93 | OSSB142P | OSSB142G | 750 | 356 | 318 | 310 | 99 | 152 | 171 | 83 | 280 |
| 144 | 94 - 102 | OSSB144P | OSSB144G | 950 | 381 | 343 | 352 | 108 | 178 | 191 | 89 | 378 |
| 146 | 108 - 115 | OSSB146P | OSSB146G | 1200 | 460 | 480 | 430 | 125 | 190 | 208 | 101 | 564 |
| 150 | 122 - 130 | OSSB150P | OSSB150G | 1400 | 500 | 500 | 550 | 138 | 250 | 210 | 120 | 922 |
| 160 | 140 - 155 | OSSB160P | OSSB160G | 2000 | 580 | 500 | 590 | 160 | 275 | 230 | 140 | 1295 |
| 170 | 158 - 167 | OSSB170P | OSSB170G | 2500 | 675 | 600 | 640 | 175 | 290 | 310 | 160 | 1950 |



CLOSED WEDGE SOCKET

| | | |
|------------------------|---|--|
| Material | : | Steel |
| Working Load Limit | : | 20% of the MBL |
| Finish | : | Painted or galvanised (< Type no. 6 standard galvanised) |
| Temperature Range | : | -40 °C up to +200 °C |
| Standard Certification | : | Certificate of Conformity 3.1 material certificate EN 10204 |

Non-standard sizes or custom products available on request.



| NR. | Rope Ø | Article number | | MBL | A | B | C | D | E | F | Weight |
|------|---------|--------------------------|------------|------|------|-----|-----|-----|-----|-----|--------|
| | mm | painted RAL 5013 blue | galvanised | tons | mm | | | | | | kg ± |
| 3103 | 17 - 19 | CWS3103P | CWS3103G | 32 | 220 | 34 | 34 | 100 | 40 | 90 | 7 |
| 3104 | 20 - 22 | CWS3104P | CWS3104G | 45 | 225 | 42 | 42 | 125 | 47 | 110 | 9 |
| 3105 | 23 - 26 | CWS3105P | CWS3105G | 70 | 290 | 50 | 50 | 130 | 55 | 125 | 14 |
| 3106 | 27 - 29 | CWS3106P | CWS3106G | 100 | 325 | 60 | 60 | 145 | 70 | 152 | 22 |
| 3107 | 30 - 33 | CWS3107P | CWS3107G | 110 | 360 | 68 | 68 | 160 | 75 | 165 | 30 |
| 3108 | 34 - 36 | CWS3108P | CWS3108G | 125 | 400 | 68 | 68 | 170 | 75 | 165 | 38 |
| 3109 | 37 - 40 | CWS3109P | CWS3109G | 150 | 500 | 72 | 72 | 240 | 80 | 185 | 49 |
| 3110 | 41 - 43 | CWS3110P | CWS3110G | 200 | 600 | 80 | 80 | 310 | 90 | 210 | 65 |
| 3111 | 44 - 48 | CWS3111P | CWS3111G | 260 | 640 | 90 | 90 | 325 | 100 | 225 | 100 |
| 3112 | 49 - 53 | CWS3112P | CWS3112G | 280 | 720 | 100 | 100 | 360 | 110 | 245 | 150 |
| 3113 | 56 | CWS3113P | CWS3113G | 360 | 775 | 110 | 110 | 400 | 120 | 265 | 175 |
| 3114 | 63 | CWS3114P | CWS3114G | 450 | 900 | 120 | 120 | 470 | 130 | 290 | 230 |
| 3115 | 75 | CWS3115P | CWS3115G | 520 | 1000 | 130 | 130 | 500 | 150 | 330 | 300 |
| 3116 | 75 | CWS3116P | CWS3116G | 520 | 1125 | 135 | 135 | 550 | 165 | 360 | 425 |

| | | |
|------------------------|---|--|
| Material | : | Cast steel |
| Working Load Limit | : | 20% of the MBL |
| Finish | : | Painted or galvanised (< Type No. 201 standard galvanised) |
| Temperature Range | : | -40 °C up to +200 °C |
| Standard Certification | : | Certificate of Conformity 3.1 material certificate EN 10204 |

TYPE APPROVED PRODUCT

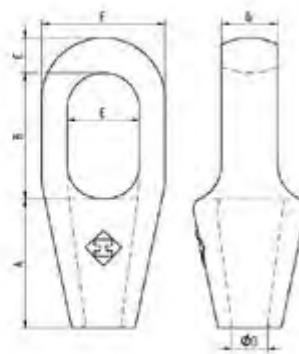
DNV

Sockets are Type Approved by DNV according DNV ST-0378



These sockets include our non-rotating system (NRS-system) which prevents the tarp from turning or slipping out of the cone and guarantees a high performance connection.

Non-standard sizes or custom products available on request.



| NR. | Rope Ø | Article number | | MBL | A | B | C | ØD | E | F | G | Weight |
|-----|-----------|--------------------------|------------|------|------|------|------|------|------|------|------|--------|
| | mm | painted RAL 5013 blue | galvanised | tons | mm | | | | | | | kg ± |
| 290 | 6 - 7 | - | CSS290G | 8 | 52 | 46 | 11 | 8 | 20 | 36,5 | 13 | 0,3 |
| 292 | 8 - 10 | - | CSS292G | 12 | 58 | 52,5 | 14 | 11 | 24 | 43 | 16 | 0,4 |
| 294 | 11 - 13 | - | CSS294G | 20 | 63,5 | 59 | 17,5 | 14 | 28,5 | 51 | 22 | 0,8 |
| 296 | 14 - 16 | - | CSS296G | 30 | 76,5 | 65 | 20,5 | 17,5 | 35 | 66,5 | 25,4 | 1,4 |
| 298 | 18 - 19 | - | CSS298G | 40 | 90 | 75 | 26 | 21 | 42 | 75 | 31 | 2,1 |
| 201 | 20 - 22 | CSS201P | CSS201G | 60 | 101 | 90 | 33 | 24 | 47 | 92 | 38 | 4 |
| 204 | 23 - 26 | CSS204P | CSS204G | 75 | 114 | 103 | 36 | 28 | 57 | 106 | 45 | 6 |
| 207 | 27 - 30 | CSS207P | CSS207G | 100 | 127 | 116 | 39 | 32 | 63 | 114 | 51 | 7,5 |
| 212 | 31 - 36 | CSS212P | CSS212G | 125 | 139 | 130 | 44 | 38 | 70 | 128 | 58 | 11 |
| 215 | 37 - 39 | CSS215P | CSS215G | 150 | 152 | 155 | 51 | 41 | 79 | 137 | 64 | 14 |
| 217 | 40 - 42 | CSS217P | CSS217G | 180 | 165 | 171 | 54 | 44 | 82 | 146 | 70 | 17,5 |
| 219 | 43 - 48 | CSS219P | CSS219G | 230 | 190 | 198 | 56 | 51 | 89 | 171 | 77 | 27,5 |
| 222 | 49 - 54 | CSS222P | CSS222G | 280 | 216 | 224 | 62 | 57 | 98 | 194 | 84 | 40 |
| 224 | 55 - 60 | CSS224P | CSS224G | 375 | 228 | 247 | 73 | 65 | 110 | 216 | 94 | 52 |
| 226 | 61 - 68 | CSS226P | CSS226G | 425 | 248 | 270 | 80 | 73 | 140 | 241 | 102 | 63 |
| 227 | 69 - 75 | CSS227P | CSS227G | 500 | 279 | 286 | 79 | 79 | 159 | 273 | 124 | 88,5 |
| 228 | 76 - 80 | CSS228P | CSS228G | 600 | 305 | 298 | 83 | 86 | 171 | 292 | 133 | 111 |
| 229 | 81 - 86 | CSS229P | CSS229G | 700 | 330 | 311 | 102 | 92 | 184 | 311 | 146 | 143 |
| 230 | 87 - 93 | CSS230P | CSS230G | 750 | 356 | 330 | 102 | 99 | 197 | 330 | 159 | 166 |
| 231 | 94 - 102 | CSS231P | CSS231G | 950 | 381 | 356 | 108 | 108 | 216 | 362 | 178 | 217 |
| 233 | 108 - 115 | CSS233P | CSS233G | 1200 | 460 | 425 | 120 | 125 | 235 | 405 | 190 | 338 |
| 240 | 122 - 130 | CSS240P | CSS240G | 1400 | 500 | 475 | 140 | 138 | 270 | 515 | 210 | 579 |
| 250 | 140 - 155 | CSS250P | CSS250G | 2000 | 580 | 550 | 150 | 160 | 300 | 510 | 250 | 654 |
| 260 | 158 - 167 | CSS260P | CSS260G | 2500 | 675 | 600 | 175 | 175 | 325 | 600 | 300 | 1063 |

| | | |
|------------------------|---|---|
| Material | : | Cast steel - Grade R3S |
| Working Load Limit | : | 20% of the MBL |
| Finish | : | Painted or Galvanised |
| Temperature Range | : | -40 ° C up to +200 ° C |
| Standard Certification | : | Certificate of Conformity 3.1 Material Certificate EN 10204 Proof Load Certificate ¹ ABS Type Approval ² |

TYPE APPROVED PRODUCT

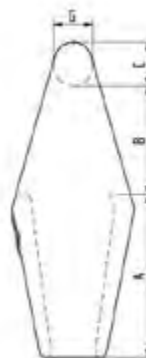
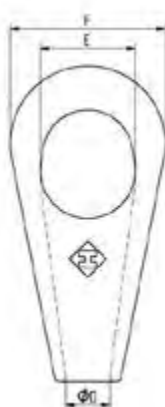


CR sockets give the best possible connection between a chain and a rope anchoring system.



These sockets include our non-rotating system (NRS-system) which prevents the tamp from turning or slipping out of the cone and guarantees a high performance connection.

Non-standard sizes or custom products available on request.



| NR. | Rope Ø | Article number | | MBL | A | B | C | ØD | E | F | G | Weight |
|-----|-----------|------------------------|------------|------|-----|-----|-----|-----|-----|-----|-----|--------|
| | mm | paint RAL 5013 blue | galvanised | tons | mm | | | | | | | kg ± |
| 512 | 31 - 36 | CR512P | CR512G | 140 | 140 | 85 | 38 | 39 | 75 | 124 | 35 | 7 |
| 517 | 37 - 42 | CR517P | CR517G | 160 | 160 | 110 | 42 | 44 | 92 | 150 | 38 | 11 |
| 519 | 43 - 48 | CR519P | CR519G | 200 | 188 | 128 | 50 | 51 | 110 | 180 | 45 | 18 |
| 522 | 49 - 54 | CR522P | CR522G | 250 | 215 | 125 | 55 | 57 | 115 | 200 | 50 | 25 |
| 524 | 55 - 60 | CR524P | CR524G | 300 | 230 | 145 | 65 | 63 | 135 | 230 | 57 | 35 |
| 526 | 61 - 68 | CR526P | CR526G | 400 | 250 | 160 | 75 | 73 | 160 | 262 | 65 | 51 |
| 527 | 69 - 75 | CR527P | CR527G | 500 | 280 | 175 | 80 | 79 | 171 | 278 | 70 | 62 |
| 528 | 76 - 80 | CR528P | CR528G | 600 | 315 | 210 | 85 | 86 | 184 | 300 | 75 | 75 |
| 529 | 81 - 86 | CR529P | CR529G | 700 | 340 | 205 | 100 | 92 | 204 | 320 | 90 | 93 |
| 530 | 87 - 93 | CR530P | CR530G | 800 | 360 | 220 | 105 | 99 | 215 | 340 | 95 | 110 |
| 531 | 94 - 102 | CR531P | CR531G | 900 | 380 | 240 | 110 | 108 | 234 | 376 | 100 | 141 |
| 533 | 108 - 115 | CR533P | CR533G | 1000 | 450 | 260 | 125 | 120 | 252 | 400 | 110 | 186 |
| 540 | 122 - 130 | CR540P | CR540G | 1250 | 517 | 293 | 140 | 140 | 275 | 460 | 125 | 317 |

¹ Sockets are proof loaded at 40% of the MBL up to an MBL of 875 Mtons.

² When ABS Product Certificate for Mooring is required, the test program as given in ABS Offshore Mooring Guide shall be followed.

| | | |
|------------------------|---|---|
| Material | : | Cast steel - Grade 4 |
| Working Load Limit | : | 20% of the MBL |
| Finish | : | Painted or Galvanised |
| Temperature Range | : | -40 ° C up to +200 ° C |
| Standard Certification | : | Certificate of Conformity 3.2 Material Certificate EN 10204 DNV-OS-E304/ABS Mooring DNV Type Approval ¹ ABS Type Approval ² |

TYPE APPROVED PRODUCT

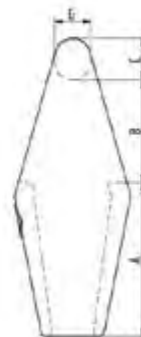
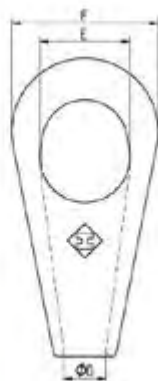


CR sockets give the best possible connection between a chain and a rope anchoring system.



These sockets include our non-rotating system (NRS-system) which prevents the tamp from turning or slipping out of the cone and guarantees a high performance connection.

Non-standard sizes or custom products available on request.



| NR. | Rope Ø | Article number | | MBL | A | B | C | ØD | E | F | G | Weight |
|-----|-----------|------------------------|------------|------|-----|-----|-----|-----|-----|-----|-----|--------|
| | mm | paint RAL 5013 blue | galvanised | tons | mm | | | | | | | kg ± |
| 512 | 31 - 36 | CR512P | CR512G | 140 | 140 | 85 | 38 | 39 | 75 | 124 | 35 | 7 |
| 517 | 37 - 42 | CR517P | CR517G | 160 | 160 | 110 | 42 | 44 | 92 | 150 | 38 | 11 |
| 519 | 43 - 48 | CR519P | CR519G | 200 | 188 | 128 | 50 | 51 | 110 | 180 | 45 | 18 |
| 522 | 49 - 54 | CR522P | CR522G | 250 | 215 | 125 | 55 | 57 | 115 | 200 | 50 | 25 |
| 524 | 55 - 60 | CR524P | CR524G | 300 | 230 | 145 | 65 | 63 | 135 | 230 | 57 | 35 |
| 526 | 61 - 68 | CR526P | CR526G | 400 | 250 | 160 | 75 | 73 | 160 | 262 | 65 | 51 |
| 527 | 69 - 75 | CR527P | CR527G | 500 | 280 | 175 | 80 | 79 | 171 | 278 | 70 | 62 |
| 528 | 76 - 80 | CR528P | CR528G | 600 | 315 | 210 | 85 | 86 | 184 | 300 | 75 | 75 |
| 529 | 81 - 86 | CR529P | CR529G | 700 | 340 | 205 | 100 | 92 | 204 | 320 | 90 | 93 |
| 530 | 87 - 93 | CR530P | CR530G | 800 | 360 | 220 | 105 | 99 | 215 | 340 | 95 | 110 |
| 531 | 94 - 102 | CR531P | CR531G | 900 | 380 | 240 | 110 | 108 | 234 | 376 | 100 | 141 |
| 533 | 108 - 115 | CR533P | CR533G | 1000 | 450 | 260 | 125 | 120 | 252 | 400 | 110 | 186 |
| 540 | 122 - 130 | CR540P | CR540G | 1250 | 517 | 293 | 140 | 140 | 275 | 460 | 125 | 317 |

¹ When DNV Product Certificate for Mooring is required, the test program as given in DNV-OS-E304 shall be followed.

² When ABS Product Certificate for Mooring is required, the test program as given in ABS Offshore Mooring Guide shall be followed.



| | | |
|------------------------|---|---|
| Material | : | Cast steel |
| Steel Grade | : | R3S and R4 |
| Finish | : | Painted or Galvanised |
| Temperature Range | : | -40 °C up to +200 °C |
| Standard Certification | : | Certificate of Conformity |
| | | 3.1 Material Certificate EN 10204 |
| | | Proof Load Certificate |
| | | Can be Supplied with ABS and/or DNV Certificate for Offshore Mooring ^{1,2} |

CR sockets give the best possible connection between a chain and a rope anchoring system.



These sockets include our non-rotating system (NRS-system) which prevents the tump from turning or slipping out of the cone and guarantees a high performance connection.

Non-standard sizes or custom products available on request.



| NR. | Rope Ø | Article number | | MBL | A | B | C | ØD | E | F | G | Weight |
|-----|-----------|------------------------|------------|------|-----|-----|-----|-----|-----|-----|-----|--------|
| | mm | paint RAL 5013 blue | galvanised | tons | mm | | | | | | | |
| 522 | 49 - 54 | CR522P | CR522G | 140 | 215 | 125 | 55 | 57 | 115 | 200 | 50 | 25 |
| 524 | 55 - 60 | CR524P | CR524G | 160 | 230 | 145 | 65 | 63 | 135 | 230 | 57 | 35 |
| 526 | 61 - 68 | CR526P | CR526G | 200 | 250 | 160 | 75 | 73 | 160 | 262 | 65 | 51 |
| 527 | 69 - 75 | CR527P | CR527G | 250 | 280 | 175 | 80 | 79 | 171 | 278 | 70 | 62 |
| 528 | 76 - 80 | CR528P | CR528G | 300 | 315 | 210 | 85 | 86 | 184 | 300 | 75 | 75 |
| 529 | 81 - 86 | CR529P | CR529G | 400 | 340 | 205 | 100 | 92 | 204 | 320 | 90 | 93 |
| 530 | 87 - 93 | CR530P | CR530G | 500 | 360 | 220 | 105 | 99 | 215 | 340 | 95 | 110 |
| 531 | 94 - 102 | CR531P | CR531G | 600 | 380 | 240 | 110 | 108 | 234 | 376 | 100 | 141 |
| 533 | 108 - 115 | CR533P | CR533G | 700 | 450 | 260 | 125 | 120 | 252 | 400 | 110 | 186 |

1 When DNV Product Certificate for Mooring is required, the test program as given in DNV-OS-E304 shall be followed.

2 When ABS Product Certificate for Mooring is required, the test program as given in ABS Offshore Mooring Guide shall be followed.



CRX MOORING SOCKET



| | | |
|------------------------|---|--|
| Material | : | Forged steel |
| Working Load Limit | : | 20% of the MBL |
| Finish | : | Painted |
| Temperature Range | : | -40 °C up to +200 °C |
| Standard Certification | : | Certificate of Conformity 3.1 material certificate EN 10204 |



ISO 12944 coating on request.

Non-standard sizes or custom products available on request.



| Article number | Size | Ød Rope | MBL | A' | | B | ØC | ØD* |
|----------------|------|----------|------|---------|---------|-----|-----|-----|
| | inch | mm | tons | min. mm | max. mm | mm | | |
| CRX_S_2 ½ | 2 ½ | 50 - 75 | 520 | 460 | 560 | 64 | 100 | 270 |
| CRX_S_3 | 3 | 75 - 90 | 715 | 570 | 650 | 76 | 120 | 320 |
| CRX_S_3 ½ | 3 ½ | 85 - 100 | 900 | 650 | 725 | 83 | 140 | 350 |
| CRX_S_4 | 4 | 90 - 110 | 1000 | 720 | 810 | 102 | 160 | 430 |

*related to specific rope diameter or wire rope construction.



SWIVEL SOCKETS







**CRX Rope Swivel
socket**

◆ P46



CR Rope Swivel

◆ P47



**Swivel Sockets with
Eye or Jaw**

◆ P49



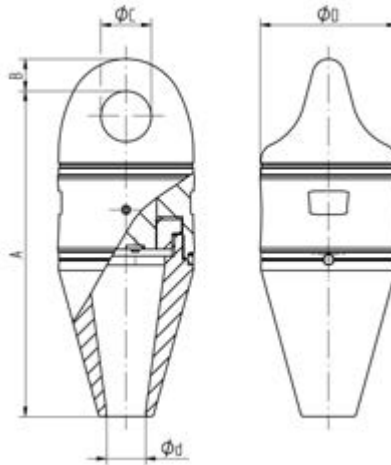
CRX ROPE SWIVEL SOCKET

| | | |
|------------------------|---|--|
| Material | : | Forged steel |
| Working Load Limit | : | 20% of the MBL |
| Finish | : | Painted |
| Temperature Range | : | -40 °C up to +200 °C |
| Standard Certification | : | Certificate of Conformity 3.1 material certificate EN 10204 |



ISO 12944 coating on request.

Non-standard sizes or custom products available on request.



| Article number | Size | Ød Rope | MBL | A' | | B | ØC | ØD' |
|----------------|----------|---------|------|---------|---------|-----|-----|-----|
| | mm | | | min. mm | max. mm | | | |
| CRX_Rope_2 ½ | 50 - 75 | | 520 | 622 | 727 | 64 | 100 | 270 |
| CRX_Rope_3 | 75 - 90 | | 715 | 762 | 827 | 76 | 120 | 320 |
| CRX_Rope_3 ½ | 85 - 100 | | 900 | 842 | 900 | 83 | 140 | 380 |
| CRX_Rope_4 | 90 - 110 | | 1000 | 916 | 1000 | 102 | 160 | 430 |

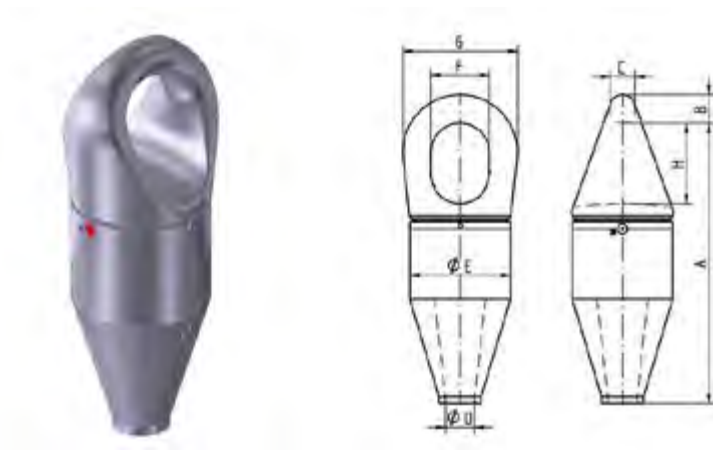
*related to specific rope diameter or wire rope construction.

| | | |
|------------------------|---|-----------------------------------|
| Material | : | Alloy steel quenched and tempered |
| Working Load Limit | : | 20% of the MBL |
| Finish | : | Painted |
| Temperature Range | : | -20 °C up to +200 °C |
| Standard Certification | : | Certificate of Conformity |



ISO 12944 coating on request.

Non-standard sizes or custom products available on request.



| Size | Rope dia. | Article number | MBL | A | B | C | D | E | F | G | H | Weight |
|--------|-----------|----------------|------|------|-----|-----|-----|-----|-----|-----|-----|--------|
| inches | mm | paint | tons | mm | | | | | | | | kg ± |
| 2 | 40 - 54 | CR-ROPE2 | 250 | 635 | 55 | 50 | 57 | 220 | 115 | 220 | 165 | 117 |
| 2 ¼ | 55 - 60 | CR-ROPE2¼ | 300 | 690 | 65 | 57 | 63 | 238 | 135 | 230 | 195 | 138 |
| 2 ½ | 61 - 72 | CR-ROPE2½ | 400 | 720 | 75 | 65 | 75 | 250 | 150 | 270 | 205 | 165 |
| 3 | 73 - 84 | CR-ROPE3 | 600 | 835 | 85 | 75 | 86 | 300 | 175 | 342 | 240 | 245 |
| 3 ½ | 85 - 93 | CR-ROPE3½ | 800 | 965 | 105 | 95 | 101 | 330 | 205 | 360 | 285 | 345 |
| 4 | 94 - 105 | CR-ROPE4 | 900 | 1060 | 110 | 100 | 108 | 365 | 225 | 380 | 320 | 485 |



SWIVEL SOCKETS WITH EYE OR JAW



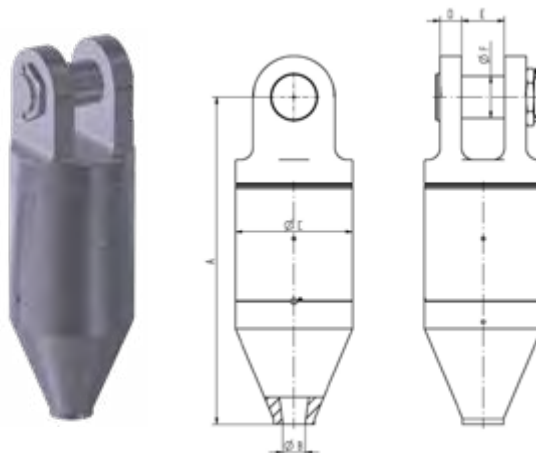
| | | |
|------------------------|---|--|
| Material | : | Alloy steel quenched and tempered |
| Working Load Limit | : | 20% of the MBL |
| Finish | : | Painted |
| Temperature Range | : | -20 °C up to +180 °C |
| Standard Certification | : | Certificate of Conformity 3.1 material certificate EN 10204 |

Non-standard sizes or custom products available on request.

SWIVEL SOCKET WITH EYE



SWIVEL SOCKET WITH JAW





SWIVELS







**Closed Body Swivel
Eye Eye**

◆ P56



**Closed Body Swivel
Jaw Jaw**

◆ P57



**Closed Body Swivel
Eye Jaw**

◆ P59



CR Chain Swivel

◆ P60



CRX Mooring Swivel

◆ P61



**Heavy Duty Swivel
Eye Eye 9,5 - 150 tons**

◆ P62



**Heavy Duty Swivel
Eye Eye 200 - 1750 tons**

◆ P63



**Heavy Duty Swivel
Jaw Jaw 9,5 - 150 tons**

◆ P64



**Heavy Duty Swivel
Jaw Jaw 200 - 1750 tons**

◆ P65



Ballweight

◆ P66



**Ballweight cylinder single
and double hook**

◆ P67



Application information

Swivels are used in lifting, mooring, and anchoring applications. All our swivels can be designed with roller, thrust, plain, and low friction bearings depending on the application of use. Along with our standard design in these catalogue, special dimensions and special designs are possible. Closed Body Swivels are used mainly for rigging and lifting application for non-permanent applications. These swivels are made with a roller bearing. On request we can modify these for subsea use.

CR swivels, chain, and Rope Swivels are mainly used in anchor lines between a rope and a chain. These swivels are designed for subsea use and have plain bearings. Our CR-connectors are the perfect fit to the chain or socket.

Instructions for use

Swivels are designed for inline loads. Side loads are not acceptable and will damage the bearings. Roller bearings can be used under load, whereas plain bearings are mainly used for positioning installation loads. For swivels with jaw and safety pin ensure proper use of the nut and split pin. If the jaw gap is wider than the connecting part, use a spacer in order to get a properly centered load. Before use make sure the swivel is greased. After subsea use make sure the swivel is inspected and greased before re-use or storage. Maintenance for swivels by an expert is recommended every two years, with a maximum interval of four years.

Inspection

Inspection should take place at least every six months and even more frequently when the swivels are used in severe operating conditions. Swivels should be inspected before use to ensure that:

- all markings are legible;
- the swivel rotates freely;
- the swivel is undamaged and free of dirt;
- a safety bolt type swivel is never used without using a securing pin;
- swivels may not be heat treated as this may affect their Working Load Limit and damage the bearings.

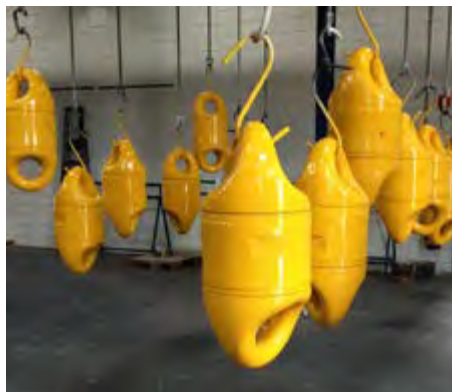
Markings

At minimum, the following markings must be hard stamped in the swivel:

- Applicable Working load or Proof load;
- Brand mark;
- Production number.



V052301





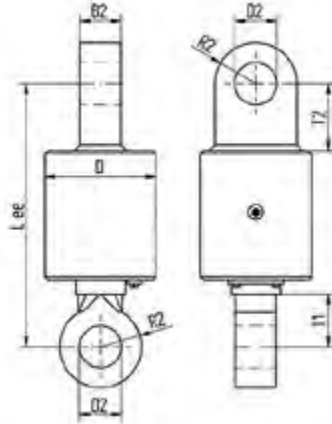
CLOSED BODY SWIVEL EYE EYE

| | | |
|------------------------|---|---|
| Material | : | High tensile steel |
| Safety Factor | : | 5 times SWL |
| Finish | : | Painted |
| Temperature Range | : | -20 °C up to +180 °C |
| Standard Certification | : | Certificate of Conformity Proof Load Certificate |



Upon request also available for underwater use.

Non-standard sizes or custom products available on request.



| SWL | Article number | B2 | D2 | D | Lee | R2 | T2 | T1 | Weight |
|------|----------------|-----|-----|-----|------|-----|-----|-----|--------|
| tons | painting | mm | | | | | | | kg ± |
| 17 | CBS017EE | 55 | 65 | 170 | 410 | 70 | 130 | 85 | 44 |
| 25 | CBS025EE | 70 | 72 | 190 | 450 | 70 | 115 | 90 | 64 |
| 35 | CBS035EE | 80 | 82 | 250 | 540 | 85 | 130 | 100 | 133 |
| 55 | CBS055EE | 100 | 103 | 270 | 690 | 105 | 160 | 120 | 213 |
| 70 | CBS070EE | 100 | 111 | 290 | 700 | 115 | 170 | 130 | 252 |
| 85 | CBS085EE | 120 | 130 | 350 | 830 | 135 | 190 | 150 | 404 |
| 120 | CBS120EE | 140 | 155 | 430 | 920 | 170 | 225 | 185 | 663 |
| 150 | CBS150EE | 160 | 181 | 470 | 960 | 190 | 245 | 205 | 892 |
| 200 | CBS200EE | 170 | 193 | 530 | 1060 | 220 | 280 | 240 | 1224 |
| 250 | CBS250EE | 190 | 253 | 600 | 1170 | 260 | 340 | 265 | 1737 |
| 300 | CBS300EE | 190 | 293 | 750 | 1280 | 300 | 390 | 350 | 2769 |

CLOSED BODY SWIVEL JAW JAW

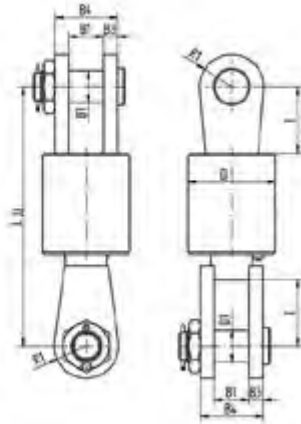


| | | |
|------------------------|---|---|
| Material | : | High tensile steel |
| Safety Factor | : | 5 times SWL |
| Finish | : | Painted |
| Temperature Range | : | -20 °C up to +180 °C |
| Standard Certification | : | Certificate of Conformity Proof Load Certificate |



Upon request also available for underwater use.

Non-standard sizes or custom products available on request.



| SWL | Art. nr. | B1 | B3 | B4 | D1 | D | Ljj | R1 | T | Weight |
|------|----------|-----|-----|-----|-----|-----|------|-----|-----|--------|
| tons | painting | mm | | | | | | | | kg ± |
| 17 | CBS017JJ | 65 | 28 | 121 | 63 | 170 | 480 | 70 | 130 | 59 |
| 25 | CBS025JJ | 76 | 30 | 136 | 70 | 190 | 565 | 70 | 145 | 84 |
| 35 | CBS035JJ | 90 | 40 | 170 | 80 | 250 | 690 | 85 | 175 | 168 |
| 55 | CBS055JJ | 110 | 50 | 210 | 100 | 270 | 800 | 105 | 175 | 274 |
| 70 | CBS070JJ | 110 | 55 | 220 | 108 | 290 | 810 | 115 | 170 | 323 |
| 85 | CBS085JJ | 130 | 75 | 280 | 127 | 350 | 870 | 135 | 175 | 529 |
| 120 | CBS120JJ | 155 | 90 | 335 | 152 | 430 | 890 | 170 | 190 | 851 |
| 150 | CBS150JJ | 170 | 100 | 370 | 178 | 470 | 1003 | 190 | 210 | 1170 |
| 200 | CBS200JJ | 190 | 110 | 410 | 190 | 530 | 1150 | 220 | 250 | 1726 |
| 250 | CBS250JJ | 210 | 120 | 450 | 250 | 600 | 1240 | 260 | 280 | 2587 |
| 300 | CBS300JJ | 250 | 175 | 600 | 290 | 750 | 1350 | 300 | 300 | 4320 |



CLOSED BODY SWIVEL EYE JAW

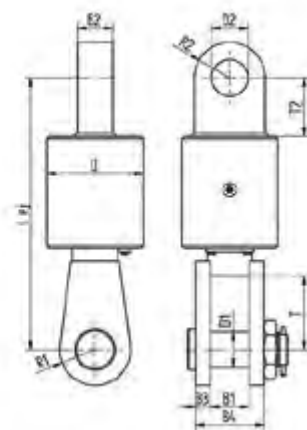


| | | |
|------------------------|---|---|
| Material | : | High tensile steel |
| Safety Factor | : | 5 times SWL |
| Finish | : | Painted |
| Temperature Range | : | -20 °C up to +180 °C |
| Standard Certification | : | Certificate of Conformity Proof Load Certificate |



Upon request also available for underwater use.

Non-standard sizes or custom products available on request.



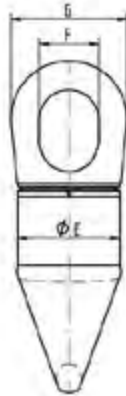
| SWL | Article number | B1 | B2 | B3 | B4 | D1 | D2 | D | L e j | R1 | R2 | T | T2 | Weight |
|------|----------------|-----|-----|-----|-----|-----|-----|-----|-------|-----|-----|-----|-----|--------|
| tons | painted | mm | | | | | | | | | | | | kg ± |
| 17 | CBS017EJ | 65 | 55 | 28 | 121 | 63 | 65 | 170 | 480 | 70 | 70 | 130 | 13 | 55 |
| 25 | CBS025EJ | 76 | 70 | 30 | 136 | 70 | 72 | 190 | 535 | 70 | 70 | 145 | 115 | 77 |
| 35 | CBS035EJ | 90 | 80 | 40 | 170 | 80 | 82 | 250 | 645 | 85 | 85 | 175 | 130 | 156 |
| 55 | CBS055EJ | 110 | 100 | 50 | 210 | 100 | 103 | 270 | 785 | 105 | 105 | 175 | 160 | 254 |
| 70 | CBS070EJ | 110 | 100 | 55 | 220 | 108 | 111 | 290 | 810 | 115 | 115 | 170 | 170 | 275 |
| 85 | CBS085EJ | 130 | 120 | 75 | 280 | 127 | 130 | 350 | 855 | 135 | 135 | 175 | 190 | 448 |
| 120 | CBS120EJ | 155 | 140 | 90 | 335 | 152 | 155 | 430 | 925 | 170 | 170 | 190 | 225 | 734 |
| 150 | CBS150EJ | 170 | 160 | 100 | 370 | 178 | 181 | 470 | 1038 | 190 | 190 | 210 | 245 | 990 |
| 200 | CBS200EJ | 190 | 170 | 110 | 410 | 190 | 193 | 530 | 1180 | 220 | 220 | 250 | 280 | 1424 |
| 250 | CBS250EJ | 210 | 190 | 120 | 450 | 250 | 253 | 600 | 1300 | 260 | 260 | 280 | 340 | 2090 |
| 300 | CBS300EJ | 250 | 190 | 175 | 600 | 290 | 293 | 750 | 1440 | 300 | 300 | 300 | 390 | 3438 |



CR CHAIN SWIVEL

| | | |
|------------------------|---|---|
| Material | : | Alloy steel quenched and tempered |
| Working Load Limit | : | 20% of the MBL |
| Finish | : | Painted |
| Temperature Range | : | -20°C up to +180°C |
| Standard Certification | : | Certificate of Conformity Proof Load Certificate |

Non-standard sizes or custom products available on request.



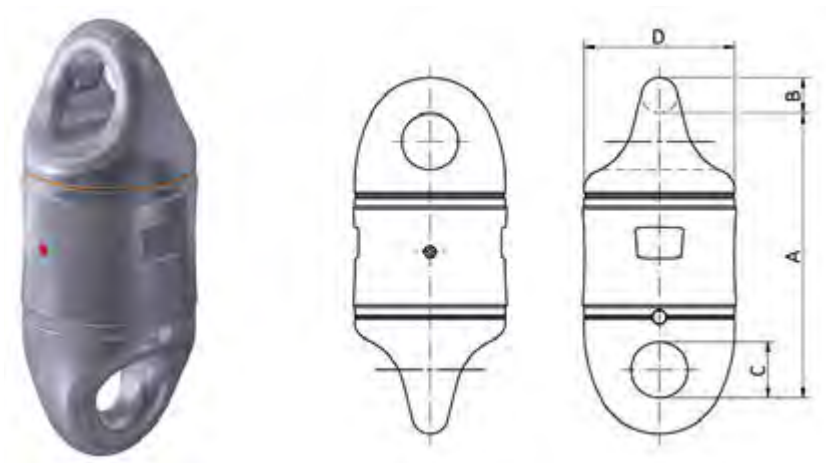
| MBL | Article number | PL | A | B | C | E | F | G | H | Weight |
|------|----------------|------|------|-----|-----|-----|-----|-----|-----|--------|
| tons | painted | tons | mm | | | | | | | kg ± |
| 250 | CR-CHAIN2 | 100 | 610 | 55 | 50 | 200 | 115 | 200 | 165 | 130 |
| 300 | CR-CHAIN2¼ | 120 | 700 | 65 | 57 | 225 | 135 | 230 | 195 | 152 |
| 400 | CR-CHAIN2½ | 160 | 710 | 75 | 65 | 250 | 150 | 270 | 205 | 180 |
| 600 | CR-CHAIN3 | 240 | 805 | 85 | 75 | 300 | 175 | 342 | 240 | 295 |
| 800 | CR-CHAIN3½ | 320 | 945 | 105 | 95 | 330 | 205 | 360 | 285 | 412 |
| 900 | CR-CHAIN4 | 360 | 1065 | 110 | 100 | 360 | 225 | 380 | 320 | 520 |

CRX MOORING SWIVEL



| | | |
|------------------------|---|---|
| Material | : | Alloy steel quenched and tempered |
| Steel Grade | : | R4 or R5 |
| Finish | : | Painted |
| Temperature Range | : | -40 °C up to +180 °C |
| Standard Certification | : | Certificate of Conformity DNV-OS-E302 DNV Type approval ABS Type approval R4 ABS Type approval R5 |

TYPE APPROVED PRODUCT



Grade R4 - Painted RAL 5013 blue

| Article number | Size | Kenter | PL | MBL | A | B | C | D | Weight ± |
|----------------|------|---------|------|-------|-----|-----|-----|-----|----------|
| | inch | inch | kN | kN | mm | | | | kg |
| CRX-2-GR4 | 2 | 2 - 2 ½ | 2327 | 2952 | 450 | 51 | 80 | 220 | 100 |
| CRX-21/2-GR4 | 2 ½ | 2 ½ - 3 | 3440 | 4364 | 540 | 64 | 100 | 275 | 187 |
| CRX-3-GR4 | 3 | 3 - 3 ½ | 4731 | 6001 | 605 | 76 | 120 | 325 | 284 |
| CRX-31/2-GR4 | 3 ½ | 3 ½ - 4 | 6310 | 8004 | 670 | 89 | 140 | 380 | 427 |
| CRX-4-GR4 | 4 | 4 - 4 ½ | 8054 | 10217 | 755 | 102 | 160 | 435 | 627 |

Grade R5 - Painted RAL 1004 yellow

| Article number | Size | Kenter | PL | MBL | A | B | C | D | Weight ± |
|----------------|------|---------|------|-------|-----|-----|-----|-----|----------|
| | inch | inch | kN | kN | mm | | | | kg |
| CRX-2-GR5 | 2 | 2 - 2 ½ | 2704 | 3447 | 450 | 51 | 80 | 220 | 100 |
| CRX-21/2-GR5 | 2 ½ | 2 ½ - 3 | 3997 | 5096 | 540 | 64 | 100 | 275 | 187 |
| CRX-3-GR5 | 3 | 3 - 3 ½ | 5498 | 7009 | 605 | 76 | 120 | 325 | 284 |
| CRX-31/2-GR5 | 3 ½ | 3 ½ - 4 | 7332 | 9348 | 670 | 89 | 140 | 380 | 427 |
| CRX-4-GR5 | 4 | 4 - 4 ½ | 9359 | 11932 | 755 | 102 | 160 | 435 | 627 |



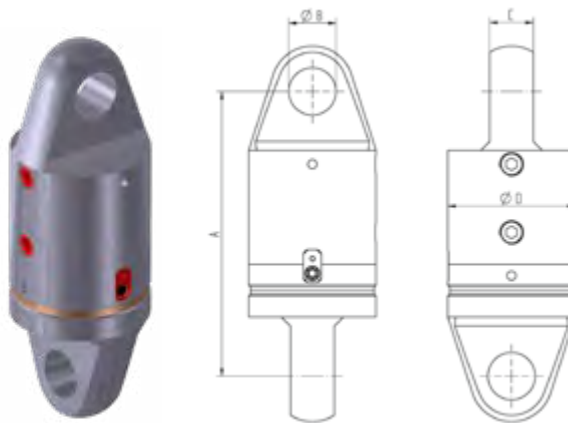
HEAVY DUTY SWIVEL EYE 9,5 - 150 TONS

| | | |
|------------------------|---|---|
| Material | : | Alloy steel quenched and tempered |
| Safety Factor | : | 5 times WLL |
| Finish | : | Painted |
| Temperature Range | : | -20 °C up to +180 °C (-40 °C available on request) |
| Standard Certification | : | Certificate of Conformity 3.1 material Certificate EN 10204 Proofload Certificate |



Upon request also available for underwater use.

Non-standard sizes or custom products available on request.



| Article number | WLL | A | ØB | C | ØD | E | T | Weight ± |
|----------------|------|-----|-----|-----|-----|------|------|----------|
| | tons | mm | | | | | | kg |
| HDS9,5EE | 9,5 | 268 | 36 | 32 | 125 | n.a. | n.a. | 19 |
| HDS13,5EE | 13,5 | 313 | 44 | 42 | 130 | n.a. | n.a. | 23 |
| HDS17EE | 17 | 313 | 52 | 48 | 140 | n.a. | n.a. | 28 |
| HDS25EE | 25 | 325 | 54 | 55 | 150 | n.a. | n.a. | 32 |
| HDS35EE | 35 | 378 | 60 | 70 | 170 | n.a. | n.a. | 52 |
| HDS55EE | 55 | 478 | 74 | 78 | 200 | n.a. | n.a. | 89 |
| HDS85EE | 85 | 538 | 88 | 98 | 230 | n.a. | n.a. | 140 |
| HDS120EE | 120 | 658 | 100 | 120 | 280 | n.a. | n.a. | 249 |
| HDS150EE | 150 | 728 | 114 | 126 | 300 | n.a. | n.a. | 321 |

HEAVY DUTY SWIVEL EYE 200 - 1750 TONS

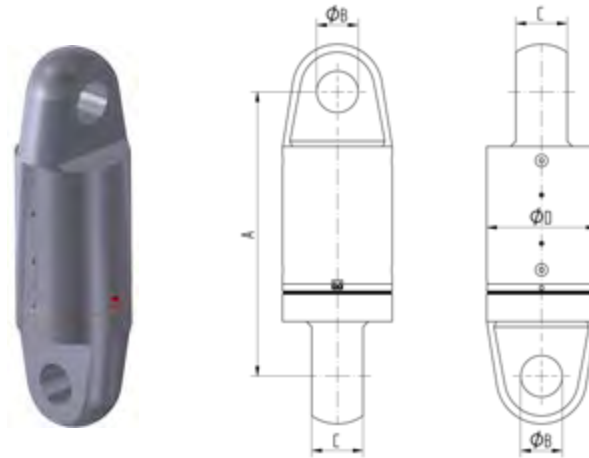


| | | |
|------------------------|---|--|
| Material | : | Alloy steel quenched and tempered |
| Safety Factor | : | 5 times WLL |
| Finish | : | Painted |
| Temperature Range | : | -20 °C up to +180 °C (-40 °C available on request) |
| Standard Certification | : | Certificate of Conformity 3.1 material Certificate EN 10204 |



Upon request also available for underwater use.

Non-standard sizes or custom products available on request.



| Article number | WLL | A | ØB | C | ØD |
|----------------|------|------|-----|-----|-----|
| | tons | mm | | | |
| HDS200EE | 200 | 865 | 130 | 150 | 350 |
| HDS250EE | 250 | 1040 | 145 | 160 | 400 |
| HDS300EE | 300 | 1175 | 155 | 175 | 480 |
| HDS400EE | 400 | 1310 | 180 | 210 | 520 |
| HDS500EE | 500 | 1355 | 190 | 235 | 520 |
| HDS600EE | 600 | 1530 | 210 | 265 | 600 |
| HDS700EE | 700 | 1580 | 222 | 290 | 600 |
| HDS800EE | 800 | 1660 | 235 | 290 | 650 |
| HDS900EE | 900 | 1780 | 255 | 310 | 710 |
| HDS1000EE | 1000 | 1830 | 275 | 330 | 710 |
| HDS1250EE | 1250 | 1995 | 305 | 350 | 790 |
| HDS1550EE | 1550 | 2115 | 325 | 350 | 840 |
| HDS1750EE | 1750 | 2225 | 365 | 410 | 890 |



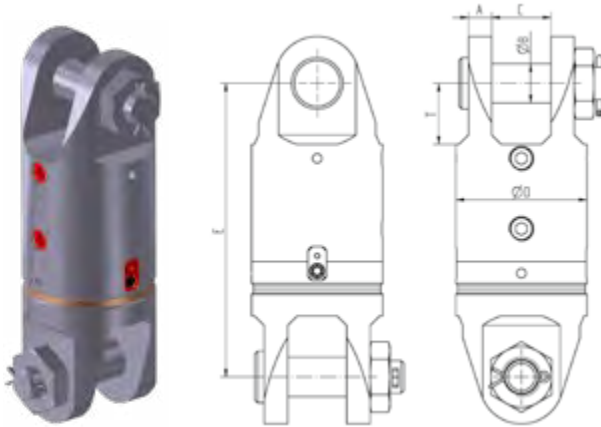
HEAVY DUTY SWIVEL JAW JAW 9,5 - 150 TONS

| | | |
|------------------------|---|---|
| Material | : | Alloy steel quenched and tempered |
| Safety Factor | : | 5 times WLL |
| Finish | : | Painted |
| Temperature Range | : | -20 °C up to +180 °C (-40 °C available on request) |
| Standard Certification | : | Certificate of Conformity 3.1 material Certificate EN 10204 Proofload Certificate |



Upon request also available for underwater use.

Non-standard sizes or custom products available on request.



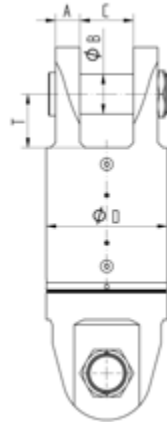
| Article number | WLL | A | ØB | C | ØD | E | T | Weight ± |
|----------------|------|----|-----|-----|-----|-----|-----|----------|
| | tons | mm | | | | | | kg |
| HDS9,5JJ | 9,5 | 16 | 32 | 50 | 125 | 268 | 50 | 21 |
| HDS13,5JJ | 13,5 | 22 | 38 | 60 | 130 | 313 | 70 | 27 |
| HDS17JJ | 17 | 25 | 42 | 63 | 140 | 313 | 65 | 33 |
| HDS25JJ | 25 | 26 | 50 | 78 | 150 | 328 | 65 | 41 |
| HDS35JJ | 35 | 35 | 57 | 90 | 180 | 378 | 75 | 66 |
| HDS55JJ | 55 | 40 | 70 | 110 | 220 | 473 | 100 | 119 |
| HDS85JJ | 85 | 50 | 83 | 130 | 260 | 538 | 110 | 195 |
| HDS120JJ | 120 | 60 | 95 | 150 | 320 | 658 | 135 | 347 |
| HDS150JJ | 150 | 65 | 108 | 180 | 360 | 728 | 150 | 471 |

| | | |
|------------------------|---|--|
| Material | : | Alloy steel quenched and tempered |
| Safety Factor | : | 5 times WLL |
| Finish | : | Painted |
| Temperature Range | : | -20 °C up to +180 °C (-40 °C available on request) |
| Standard Certification | : | Certificate of Conformity 3.1 material Certificate EN 10204 |



Upon request also available for underwater use.

Non-standard sizes or custom products available on request.



| Article number | WLL | A | ØB | C | ØD | E | T |
|----------------|------|-----|-----|-----|------|------|-----|
| | tons | mm | | | | | |
| HDS200JJ | 200 | 70 | 125 | 160 | 360 | 875 | 170 |
| HDS250JJ | 250 | 80 | 140 | 180 | 450 | 1050 | 200 |
| HDS300JJ | 300 | 90 | 150 | 195 | 490 | 1185 | 215 |
| HDS400JJ | 400 | 100 | 175 | 230 | 570 | 1320 | 240 |
| HDS500JJ | 500 | 120 | 185 | 255 | 630 | 1365 | 250 |
| HDS600JJ | 600 | 130 | 205 | 285 | 690 | 1540 | 265 |
| HDS700JJ | 700 | 140 | 217 | 310 | 740 | 1590 | 280 |
| HDS800JJ | 800 | 140 | 230 | 310 | 770 | 1670 | 305 |
| HDS900JJ | 900 | 150 | 250 | 330 | 820 | 1790 | 320 |
| HDS1000JJ | 1000 | 165 | 270 | 350 | 880 | 1840 | 335 |
| HDS1250JJ | 1250 | 175 | 300 | 370 | 970 | 2005 | 375 |
| HDS1550JJ | 1550 | 175 | 320 | 370 | 1000 | 2125 | 425 |
| HDS1750JJ | 1750 | 205 | 360 | 430 | 1140 | 2235 | 440 |



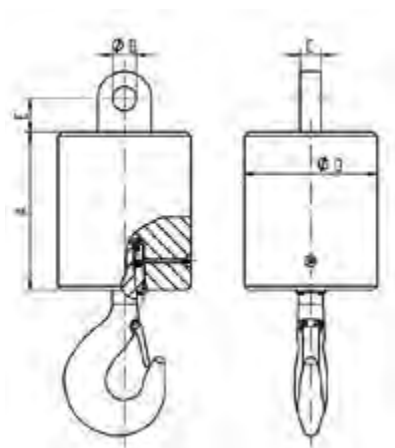
| | | |
|------------------------|---|--|
| Material | : | Alloy steel quenched and tempered |
| Safety Factor | : | 4 times SWL |
| Finish | : | Painted |
| Temperature Range | : | -20 °C up to +180 °C (-40 °C available on request) |
| Standard Certification | : | Certificate of Conformity Proofload certificate included 3.1 material Certificate EN 10204 |



Upon request also available for underwater use.

Non-standard sizes or custom products available on request.

Please contact our sales representatives or visit our online product platform for more information about our product applications and options.



BALLWEIGHT CYLINDER SINGLE AND DOUBLE HOOK



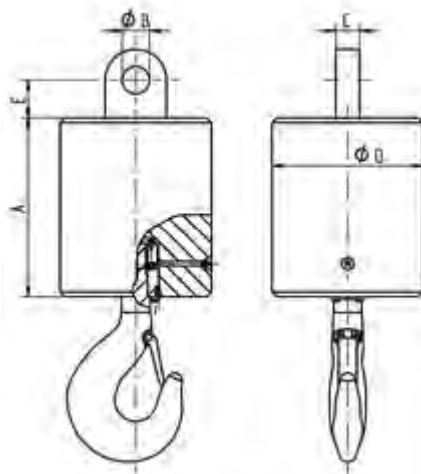
| | | |
|------------------------|---|--|
| Safety | : | 4 times WLL |
| Finish | : | Painted |
| Temperature Range | : | -20°C up to +180°C (-40°C available on request) |
| Standard Certification | : | Certificate of Conformity Proofload certificate included 3.1 material Certificate EN 10204 |



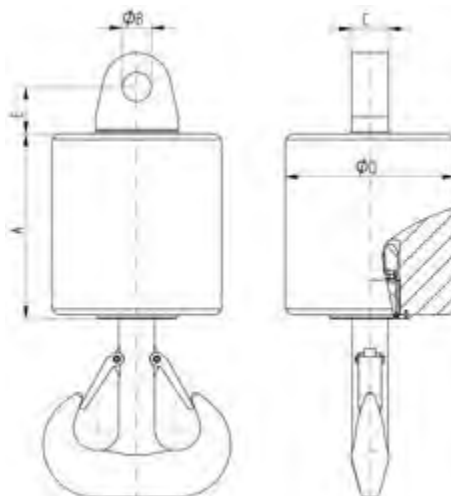
Upon request also available for underwater use.

Non-standard sizes or custom products available on request.

BALLWEIGHT CYLINDER SINGLE HOOK



BALLWEIGHT CYLINDER DOUBLE HOOK





HOOK BLOCKS FOR OVERHEAD TRAVELLING CRANES







1 and 2 sheave(s) overhead travelling crane

◆ P74



4 and 6 sheaves overhead travelling crane

◆ P75





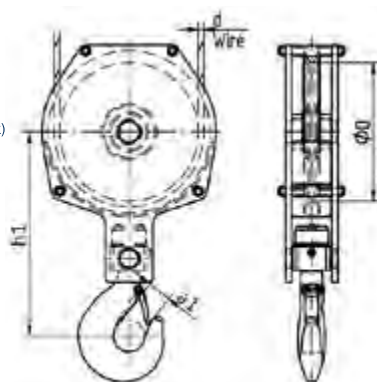
| | | |
|------------------------|---|---|
| Safety Factor | : | 4 times |
| Finish | : | Painted |
| Temperature Range | : | -20 °C up to +180 °C (-40 °C on request) |
| Standard Certification | : | Certificate of Conformity Hook Certificate |



Several options for painting according ISO 12944 on request.

Proof Load Certificate on request.

Non-standard sizes or custom products available on request.



SPECIFICATION & OPTIONS



Type of hook

Hooks are available in single or double version.



Size of hook



Dead-end becket

Connector for wire rope end-fitting.



Hook locking device

Available upon request in order to prevent the hook from twisting. Can be programmed to four times 90°.



Size of wire

The size of the wire is relevant for the groove and the diameter (D/d-ratio) of the sheaves.



Lifting class

SWL/WLL

Working Load Limit (or Safe Working Load); the maximum load the relevant product is allowed to lift.



Heat protection shield

Available upon request along with your product in order to protect the structure from high temperatures.



1 AND 2 SHEAVE(S) OVERHEAD TRAVELLING CRANE

| | | |
|-------------------------------|---|---|
| Safety Factor | : | 4 times |
| Finish | : | Painted |
| Temperature Range | : | -20 °C up to +180 °C (-40 °C on request) |
| Standard Certification | : | Certificate of Conformity Hook Certificate |

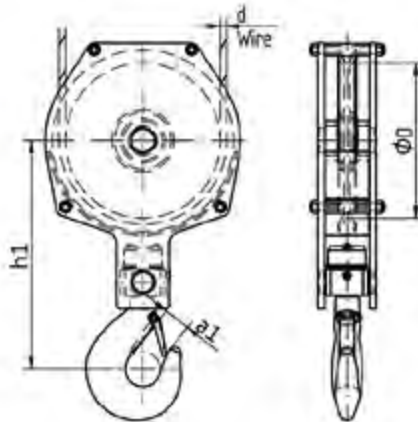


Several options for painting according ISO 12944 on request.

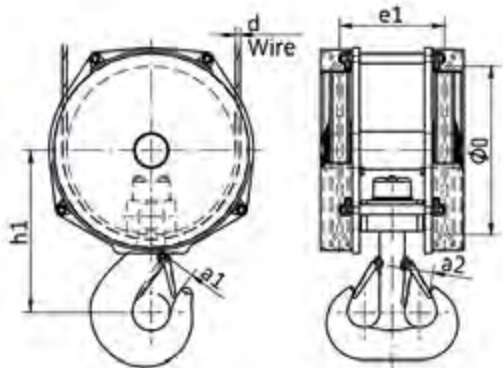
Proof Load Certificate on request.

Non-standard sizes or custom products available on request.

1 SHEAVE OVERHEAD TRAVELLING CRANE



2 SHEAVES OVERHEAD TRAVELLING CRANE



4 AND 6 SHEAVES OVERHEAD TRAVELLING CRANE



| | | |
|-------------------------------|---|---|
| Safety Factor | : | 4 times |
| Finish | : | Painted |
| Temperature Range | : | -20 °C up to +180 °C (-40 °C on request) |
| Standard Certification | : | Certificate of Conformity Hook Certificate |

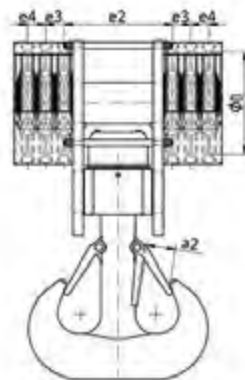
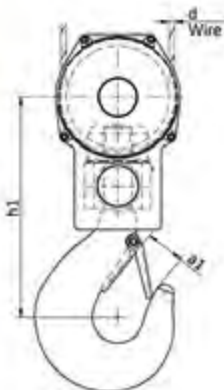


Several options for painting according ISO 12944 on request.

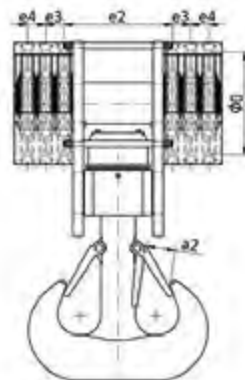
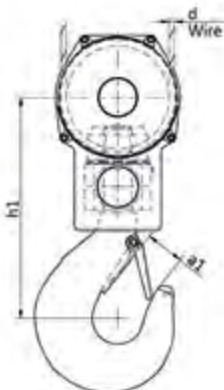
Proof Load Certificate on request.

Non-standard sizes or custom products available on request.

4 SHEAVES OVERHEAD TRAVELLING CRANE



6 SHEAVES OVERHEAD TRAVELLING CRANE





HOOK BLOCKS







**Standard reeve block
1 sheave**

◆ P84



**Standard reeve block
3 sheaves**

◆ P85



**Hook blocks speed reeve
1 and 3 sheave(s)**

◆ P88



**Hook blocks speed reeve
5 and 7 sheaves**

◆ P89



**Shipboard crane
block 1 sheave**

◆ P90



**Shipboard crane
block 2 sheaves**

◆ P91



Twin Hook blocks

◆ P93



General operating instructions for blocks

In general, Blocks are used as part of a system that is used to hoist, lift, and/or move a load. Without appropriate measures, the blocks may not be used under extreme conditions such as high or low temperatures and chemical influences, nor for heavily jolting loads. We recommend that Blocks only be used within the specified safe working load (SWL).

General maintenance of blocks

Blocks have to be checked and lubricated regularly. Maintenance depends on the frequency of use, the user's judgment and the conditions under which the Blocks are used.

The following points apply to general maintenance:

1. Load-bearing pins or shafts, sheaves, plates, bearings, and connecting points have to be checked regularly.
Non-standard use can lead to premature replacement of the components or rejection of the Block.
2. Inexpert maintenance and/or overloading can lead to deformation! If the plates, pins, shafts, connecting points, etc., are deformed, they must be replaced/repaired.
3. Deformed plates must be replaced.
4. After dismantling and assembly, all nuts, bolts, and other fastenings should be checked.
The original safety measures must be applied.
5. Pins and shafts have to be checked regularly.
6. If applicable: check that the shaft nuts are in the correct position.
7. Check that the safety valve(s) are in good working order.
8. Welded stress related sections must be checked regularly for cracks.
9. If any defects are found, contact the supplier of the Blocks, mentioning the brands.



V052301







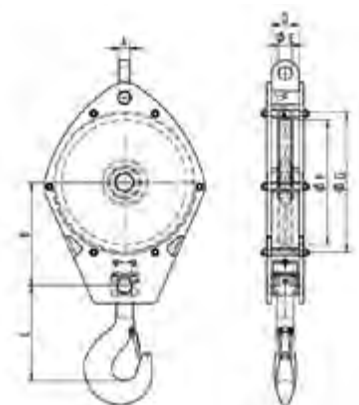
| | | |
|------------------------|---|---|
| Safety Factor | : | 4 times |
| Finish | : | Painted |
| Temperature Range | : | -20 °C up to +180 °C (-40 °C on request) |
| Standard Certification | : | Certificate of Conformity Hook Certificate |



Several options for painting according ISO 12944 on request.

Proof Load Certificate on request.

Non-standard sizes or custom products available on request.



SPECIFICATION & OPTIONS



Own weight

The product's own weight.



Size of wire

The size of the wire is relevant for the groove and the diameter (D/d-ratio) of the sheaves.



Type of hook

Hooks are available in single or double version.



Size of hook



Hook locking device

Available upon request in order to prevent the hook from twisting. Can be programmed to four times 90°.



Crane type

The crane type is decisive in selecting the pulley block. We advise you on the right product to fit your crane type.



Number of sheaves

The number of sheaves per product. This can be a standard amount or one available upon request.



Dead-end becket

Connector for wire rope end-fitting.

SWL/WLL

Working Load Limit (or Safe Working Load); the maximum load the relevant product is allowed to lift.



STANDARD REEVE BLOCK 1 SHEAVE

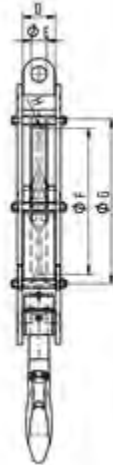
| | | |
|------------------------|---|---|
| Safety Factor | : | 4 times |
| Finish | : | Painted |
| Temperature Range | : | -20 °C up to +180 °C (-40 °C on request) |
| Standard Certification | : | Certificate of Conformity Hook Certificate |



Several options for painting according ISO 12944 on request.

Proof Load Certificate on request.

Non-standard sizes or custom products available on request.



SPECIFICATION & OPTIONS



Own weight

The product's own weight.



Size of wire

The size of the wire is relevant for the groove and the diameter (D/d-ratio) of the sheaves.



Type of hook

Hooks are available in single or double version.



Size of hook



Hook locking device

Available upon request in order to prevent the hook from twisting. Can be programmed to four times 90°.



Crane type

The crane type is decisive in selecting the pulley block. We advise you on the right product to fit your crane type.



Number of sheaves

The number of sheaves per product. This can be a standard amount or one available upon request.



Dead-end becket

Connector for wire rope end-fitting.

SWL/WLL

Working Load Limit (or Safe Working Load); the maximum load the relevant product is allowed to lift.

STANDARD REEVE BLOCK 3 SHEAVES



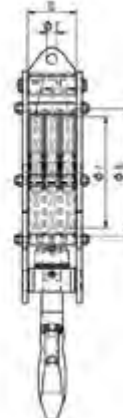
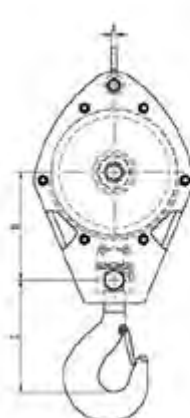
| | | |
|------------------------|---|---|
| Safety Factor | : | 4 times |
| Finish | : | Painted |
| Temperature Range | : | -20 °C up to +180 °C (-40 °C on request) |
| Standard Certification | : | Certificate of Conformity Hook Certificate |



Several options for painting according ISO 12944 on request.

Proof Load Certificate on request.

Non-standard sizes or custom products available on request.



SPECIFICATION & OPTIONS



Own weight

The product's own weight.



Size of wire

The size of the wire is relevant for the groove and the diameter (D/d-ratio) of the sheaves.



Type of hook

Hooks are available in single or double version.



Size of hook



Hook locking device

Available upon request in order to prevent the hook from twisting. Can be programmed to four times 90°.



Crane type

The crane type is decisive in selecting the pulley block. We advise you on the right product to fit your crane type.



Number of sheaves

The number of sheaves per product. This can be a standard amount or one available upon request.



Dead-end becket

Connector for wire rope end-fitting.

SWL/WLL

Working Load Limit (or Safe Working Load); the maximum load the relevant product is allowed to lift.





| | | |
|------------------------|---|---|
| Safety Factor | : | 4 times |
| Finish | : | Painted |
| Temperature Range | : | -20 °C up to +180 °C (-40 °C on request) |
| Standard Certification | : | Certificate of Conformity Hook Certificate |



Several options for painting according ISO 12944 on request.

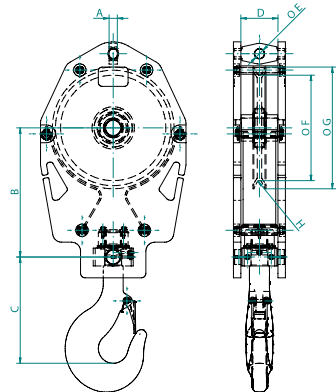


Upon request also available for underwater use.

Proof Load Certificate on request.

Non-standard sizes or custom products available on request.

Please contact our sales representatives or visit our online product platform for more information about our product applications and options.



SPECIFICATION & OPTIONS



Own weight

The product's own weight.



Size of wire

The size of the wire is relevant for the groove and the diameter (D/d-ratio) of the sheaves.



Type of hook

Hooks are available in single or double version.



Size of hook



Dead-end becket

Connector for wire rope end-fitting.



Crane type

The crane type is decisive in selecting the pulley block. We advise you on the right product to fit your crane type.



Number of sheaves

The number of sheaves per product. This can be a standard amount or one available upon request.

SWL/WLL

Working Load Limit (or Safe Working Load); the maximum load the relevant product is allowed to lift.



Hook locking device

Available upon request in order to prevent the hook from twisting. Can be programmed to four times 90°.



HOOK BLOCKS SPEED REEVE 1 AND 3 SHEAVE(S)

| | | |
|------------------------|---|---|
| Safety Factor | : | 4 times |
| Finish | : | Painted |
| Temperature Range | : | -20 °C up to +180 °C (-40 °C on request) |
| Standard Certification | : | Certificate of Conformity Hook Certificate |



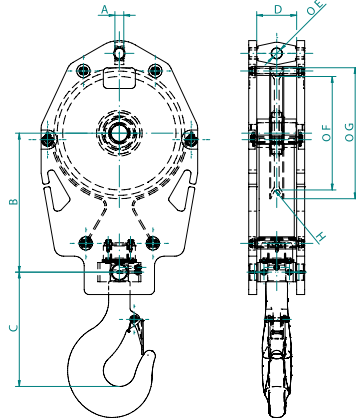
Several options for painting according ISO 12944 on request.

Proof Load Certificate on request.

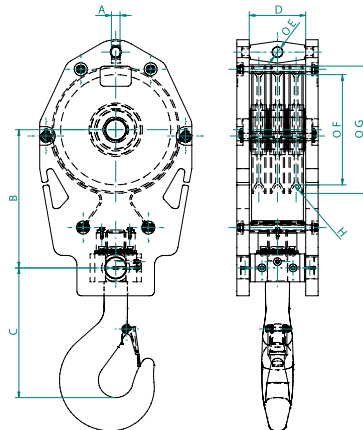
Non-standard sizes or custom products available on request.

Please contact our sales representatives or visit our online product platform for more information about our product applications and options.

HOOK BLOCK SPEED REEVE 1 SHEAVE



HOOK BLOCK SPEED REEVE 3 SHEAVES



HOOK BLOCKS SPEED REEVE 5 AND 7 SHEAVES



| | | |
|------------------------|---|---|
| Safety Factor | : | 4 times |
| Finish | : | Painted |
| Temperature Range | : | -20 °C up to +180 °C (-40 °C on request) |
| Standard Certification | : | Certificate of Conformity Hook Certificate |



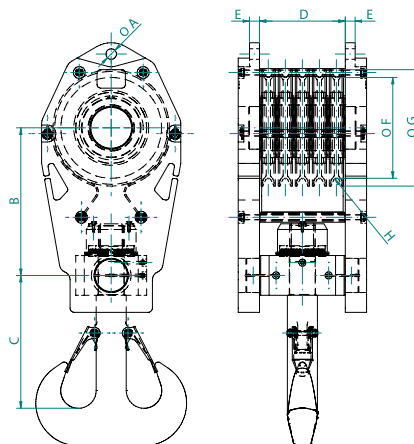
Several options for painting according ISO 12944 on request.

Proof Load Certificate on request.

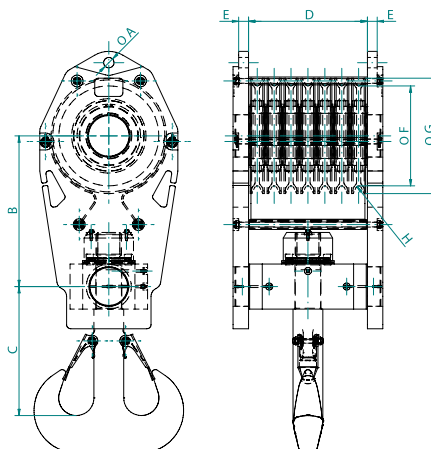
Non-standard sizes or custom products available on request.

Please contact our sales representatives or visit our online product platform for more information about our product applications and options.

HOOK BLOCK SPEED REEVE 5 SHEAVES



HOOK BLOCK SPEED REEVE 7 SHEAVES





SHIPBOARD CRANE BLOCK 1 SHEAVE

| | | |
|--------------------------|---|---|
| Finish | : | Painted |
| Temperature Range | : | -20 °C up to +180 °C |
| Standard Certification | : | Certificate of Conformity |
| Certification on Request | : | 3.1 material Certificate EN 10204 Hook Certificate |

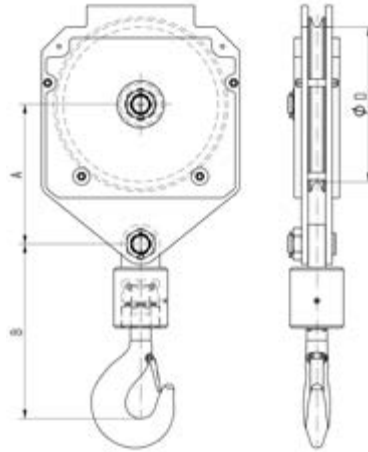


Several options for painting according ISO 12944 on request.

Proof Load Certificate on request.

Non-standard sizes or custom products available on request.

Please contact our sales representatives or visit our online product platform for more information about our product applications and options.



SPECIFICATION & OPTIONS



Own weight

The product's own weight.



Size of wire

The size of the wire is relevant for the groove and the diameter (D/d-ratio) of the sheaves.



Type of hook

Hooks are available in single or double version.



Size of hook



Dead-end becket

Connector for wire rope end-fitting.



Crane type

The crane type is decisive in selecting the pulley block. We advise you on the right product to fit your crane type.



Number of sheaves

The number of sheaves per product. This can be a standard amount or one available upon request.

SWL/WLL

Working Load Limit (or Safe Working Load); the maximum load the relevant product is allowed to lift.

SHIPBOARD CRANE BLOCK 2 SHEAVES



| | | |
|--------------------------|---|---|
| Finish | : | Painted |
| Temperature Range | : | -20 °C up to +180 °C (-40 °C on request) |
| Standard Certification | : | Certificate of Conformity |
| Certification on Request | : | 3.1 material Certificate EN 10204 |

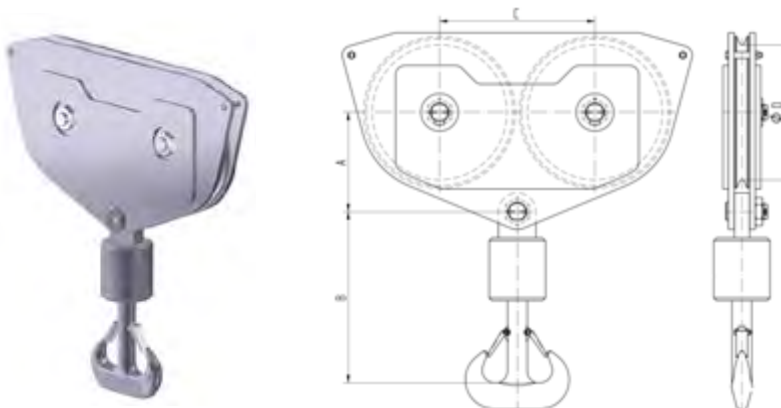


Several options for painting according ISO 12944 on request.

Proof Load Certificate on request.

Non-standard sizes or custom products available on request.

Please contact our sales representatives or visit our online product platform for more information about our product applications and options.



SPECIFICATION & OPTIONS



Own weight

The product's own weight.



Size of wire

The size of the wire is relevant for the groove and the diameter (D/d-ratio) of the sheaves.



Type of hook

Hooks are available in single or double version.



Size of hook



Dead-end becket

Connector for wire rope end-fitting.



Crane type

The crane type is decisive in selecting the pulley block. We advise you on the right product to fit your crane type.



Number of sheaves

The number of sheaves per product. This can be a standard amount or one available upon request.

SWL/WLL

Working Load Limit (or Safe Working Load); the maximum load the relevant product is allowed to lift.





| | | |
|--------------------------|---|---|
| Finish | : | Painted |
| Temperature Range | : | -20 °C up to +180 °C (-40 °C on request) |
| Standard Certification | : | Certificate of Conformity |
| Certification on Request | : | 3.1 material Certificate EN 10204 |

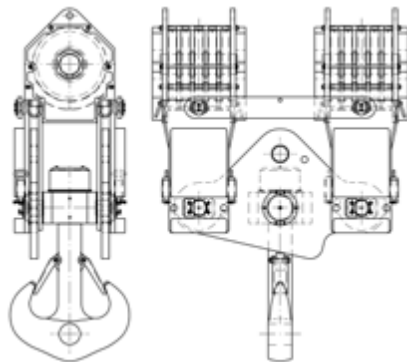


Several options for painting according ISO 12944 on request.

Proof Load Certificate on request.

Blocks can be used individually as single blocks with the same hook.

Non-standard sizes or custom products available on request.



SPECIFICATION & OPTIONS



Size of wire

The size of the wire is relevant for the groove and the diameter (D/d-ratio) of the sheaves.

SWL/WLL

Working Load Limit (or Safe Working Load); the maximum load the relevant product is allowed to lift.



Type of hook

Hooks are available in single or double version.



Size of hook



Dead-end becket

Connector for wire rope end-fitting.



Own weight

The product's own weight.



HOOKS







Single hooks

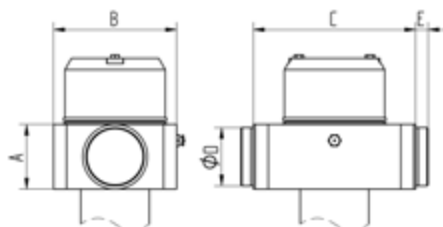
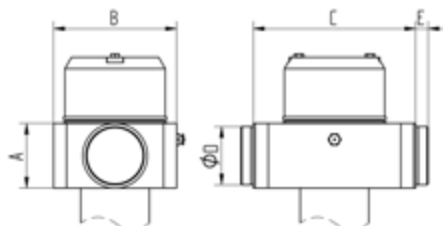
◆ P99



Double hooks

◆ P99







SHEAVES







Sheave KG and SG

◆ P106



Sheave MG

◆ P107



Vertical lead sheave

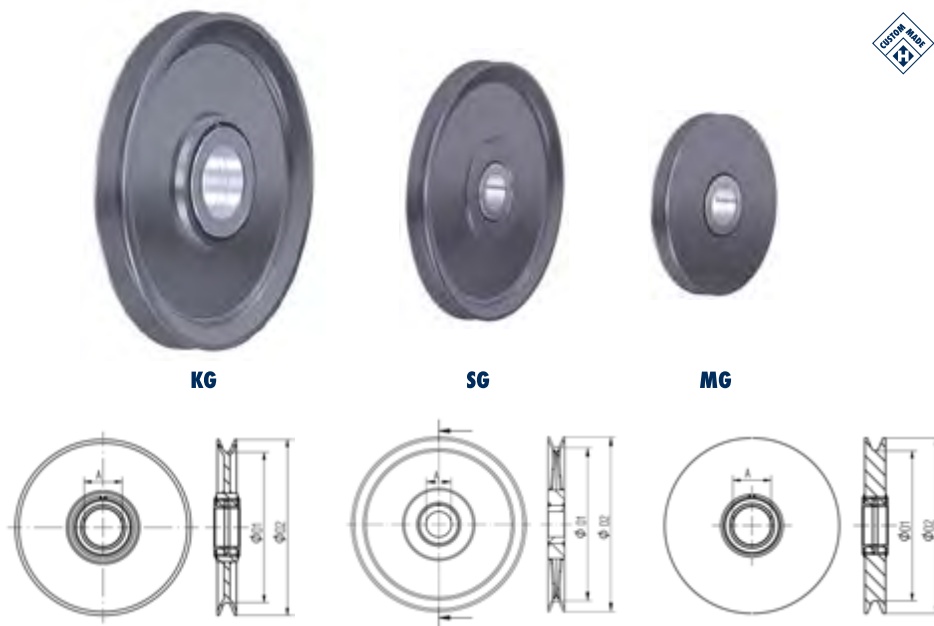
◆ P108



Horizontal lead sheave

◆ P109





3 types of sheaves: KG, SG and MG.

KG: Roll-forged sheave.

SG: Welded sheave.

MG: Sheave machined from solid.

SPECIFICATION & OPTIONS



Groove hardness

Groove hardness to be realized to meet your needs.



Size of wire

The size of the wire is relevant for the groove and the diameter (D/d-ratio) of the sheaves.



Own weight

The product's own weight.



Type of bearing

Type of bearing; roller or bronze.



Color code

Color code expressed in RAL values.



Painting system

System customized to the customer's requirements.



SHEAVES KG AND SG

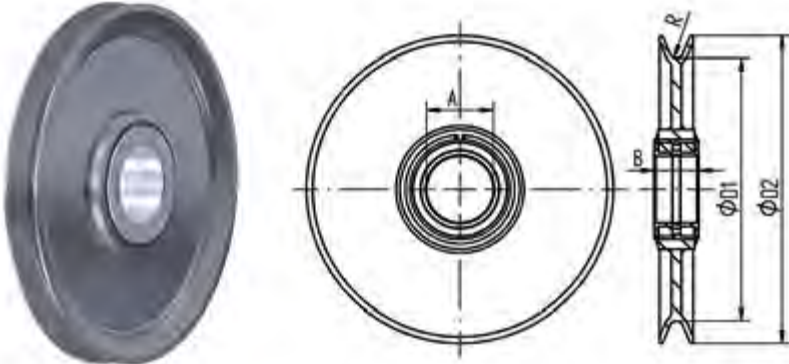


SHEAVE KG



Sheave is available in any size with maximum outside diameter (d_2) 1200mm and rope diameter 40mm.

On request available with any type of bearing.

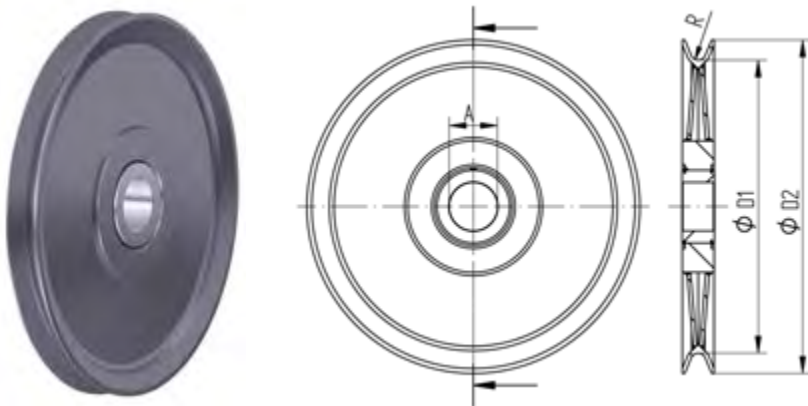


SHEAVE SG



Sheave is available in any size up to 4000mm.

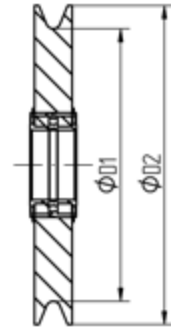
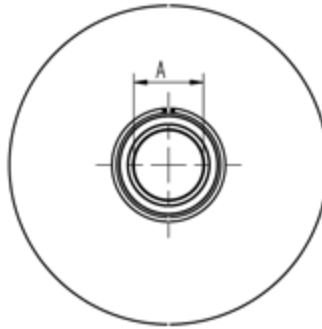
On request available with any type of bearing.





Sheave is available in any size.

On request available with any type of bearing.





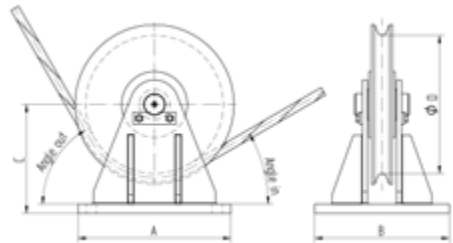
VERTICAL LEAD SHEAVE



| | | |
|------------------------|---|---|
| Material | : | High tensile steel |
| Finish | : | Painted |
| Temperature Range | : | -20 °C up to +180 °C (-40 °C on request) |
| Standard Certification | : | Certificate of Conformity |



Several options for painting according ISO 12944 on request.



Non-standard sizes or custom products available on request.

SPECIFICATION & OPTIONS



Size of wire

The size of the wire is relevant for the groove and the diameter (D/d-ratio) of the sheaves.



Wrap angle

The angle between the incoming and outgoing wire.



Type of bearing

Type of bearing: roller or bronze.



Line pull (tons)

Line pull of single line.



Connection to construction

Connection to construction: bolted or welded.



Reevings

Reeving with or without releasing the end-fitting.

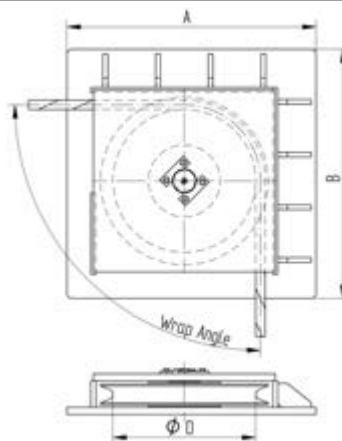


| | | |
|------------------------|---|---|
| Material | : | High tensile steel |
| Finish | : | Painted |
| Temperature Range | : | -20 °C up to +180 °C (-40 °C on request) |
| Standard Certification | : | Certificate of Conformity |



Several options for painting according ISO 12944 on request.

Non-standard sizes or custom products available on request.



SPECIFICATION & OPTIONS



Size of wire

The size of the wire is relevant for the groove and the diameter (D/d-ratio) of the sheaves.



Wrap angle

The angle between the incoming and outgoing wire.



Type of bearing

Type of bearing: roller or bronze.



Line pull (tons)

Line pull of single line.



Connection to construction

Connection to construction: bolted or welded.



Reeving

Reeving with or without releasing the end-fitting.



GENERAL PRODUCTS







**HD turnbuckle
Eye Eye**

◆ P114



**HD turnbuckle
Jaw Jaw**

◆ P115



**HD turnbuckle
Eye Jaw**

◆ P117



**Light type
Snatchblock**

◆ P118



**Heavy type
Snatchblock**

◆ P119



**Snatchblock with
safety window**

◆ P121



**Construction Block
with Eye**

◆ P122



**Construction Block
with Jaw**

◆ P123



Special products

◆ P125



HD TURNBUCKLE EYE EYE

| | | |
|------------------------|---|---------------------------|
| Material | : | High tensile steel |
| Safety Factor | : | 5 times |
| Finish | : | Painted RAL 5013 |
| Temperature Range | : | -20 °C up to +180 °C |
| Standard Certification | : | Certificate of Conformity |

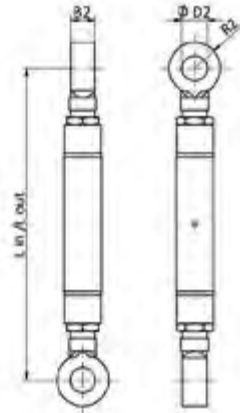
This type of rigging screw meets the requirement as laid down in the Dutch, British, American and other dock regulations. Deliverable with two securing nuts or plates upon request. Custom design screws can be constructed in any size and capacity. Rigging screws are supplied with trapezium thread.

Proof Load Certificate on request.

Non-standard sizes or custom products available on request.

Only with additional locking device suitable for lifting.
(On request available)

Standard supplied with two securing nuts. This type of rigging screw meets the requirements as laid down in the Dutch, British, American and other Dock regulations.



| Trap. | Article number | SWL | | L IN | L OUT | B2 (mm) | R2 (mm) | ØD2 (mm) |
|---------|------------------------|------|------|------|-------|----------|---------|----------|
| mm | paint RAL 5013 blue | tons | kN | mm | | Stud Eye | | |
| 55 x 8 | HDRS013,5EE | 13,5 | 133 | 840 | 1165 | 50 | 60 | 53 |
| 65 x 8 | HDRS017EE | 17 | 167 | 920 | 1270 | 55 | 70 | 65 |
| 70 x 8 | HDRS025EE | 25 | 245 | 975 | 1305 | 70 | 70 | 72 |
| 75 x 8 | HDRS030EE | 30 | 294 | 1020 | 1390 | 70 | 75 | 74 |
| 80 x 8 | HDRS035EE | 35 | 343 | 1100 | 1500 | 80 | 85 | 82 |
| 90 x 8 | HDRS045EE | 45 | 442 | 1170 | 1650 | 90 | 95 | 93 |
| 100 x 8 | HDRS055EE | 55 | 540 | 1270 | 1780 | 100 | 105 | 103 |
| 110 x 8 | HDRS070EE | 70 | 687 | 1390 | 1940 | 100 | 115 | 111 |
| 120 x 8 | HDRS085EE | 85 | 834 | 1515 | 2150 | 125 | 135 | 130 |
| 130 x 8 | HDRS100EE | 100 | 981 | 1600 | 2330 | 125 | 145 | 143 |
| 140 x 8 | HDRS120EE | 120 | 1177 | 1735 | 2330 | 140 | 170 | 155 |
| 160 x 8 | HDRS160EE | 160 | 1570 | 1860 | 2460 | 160 | 190 | 181 |
| 180 x 8 | HDRS200EE | 200 | 1962 | 2000 | 2620 | 170 | 200 | 193 |
| 200 x 8 | HDRS250EE | 250 | 2453 | 2210 | 2880 | 190 | 260 | 253 |

| | | |
|------------------------|---|---------------------------|
| Material | : | High tensile steel |
| Safety Factor | : | 5 times |
| Finish | : | Painted RAL 5013 |
| Temperature Range | : | -20 °C up to +180 °C |
| Standard Certification | : | Certificate of Conformity |

This type of rigging screw meets the requirement as laid down in the Dutch, British, American and other dock regulations. Deliverable with two securing nuts or plates upon request. Custom design screws can be constructed in any size and capacity. Rigging screws are supplied with trapezium thread.

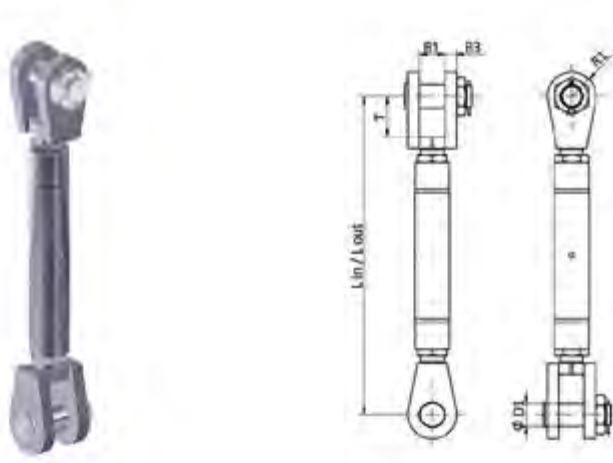
Proof Load Certificate on request.

Non-standard sizes or custom products available on request.

Only with additional locking device suitable for lifting.

(On request available)

Standard supplied with two securing nuts. This type of rigging screw meets the requirements as laid down in the Dutch, British, American and other Dock regulations.



| Trap. | Article number | SWL | | L IN | L OUT | B1 (mm) | B3 (mm) | T (mm) | ØD1 (mm) | R1 (mm) |
|---------|--------------------------|------|------|------|-------|------------|---------|--------|----------|---------|
| mm | Painted RAL 5013 blue | tons | kN | mm | | Double Lug | | | | |
| 55 x 8 | HDRS013,5JJ | 13.5 | 133 | 935 | 1260 | 55 | 20 | 120 | 51 | 60 |
| 65 x 8 | HDRS017JJ | 17 | 167 | 1010 | 1360 | 65 | 28 | 130 | 63 | 70 |
| 70 x 8 | HDRS025JJ | 25 | 245 | 1085 | 1415 | 76 | 30 | 145 | 70 | 70 |
| 75 x 8 | HDRS030JJ | 30 | 294 | 1160 | 1530 | 80 | 35 | 160 | 72 | 75 |
| 80 x 8 | HDRS035JJ | 35 | 343 | 1250 | 1650 | 90 | 40 | 175 | 80 | 85 |
| 90 x 8 | HDRS045JJ | 45 | 442 | 1300 | 1780 | 100 | 45 | 175 | 90 | 95 |
| 100 x 8 | HDRS055JJ | 55 | 540 | 1380 | 1890 | 110 | 50 | 175 | 100 | 105 |
| 110 x 8 | HDRS070JJ | 70 | 687 | 1480 | 2025 | 110 | 55 | 175 | 108 | 115 |
| 120 x 8 | HDRS085JJ | 85 | 834 | 1565 | 2200 | 130 | 75 | 175 | 127 | 135 |
| 130 x 8 | HDRS100JJ | 100 | 981 | 1630 | 2360 | 140 | 90 | 175 | 140 | 145 |
| 140 x 8 | HDRS120JJ | 120 | 1177 | 1745 | 2340 | 155 | 90 | 190 | 152 | 170 |
| 160 x 8 | HDRS160JJ | 160 | 1570 | 1870 | 2470 | 170 | 100 | 210 | 178 | 190 |
| 180 x 8 | HDRS200JJ | 200 | 1962 | 2020 | 2640 | 190 | 110 | 250 | 190 | 220 |
| 200 x 8 | HDRS250JJ | 250 | 2453 | 2170 | 2840 | 210 | 120 | 280 | 250 | 260 |



| | | |
|------------------------|---|---------------------------|
| Material | : | High tensile steel |
| Safety Factor | : | 5 times |
| Finish | : | Painted RAL 5013 |
| Temperature Range | : | -20 °C up to +180 °C |
| Standard Certification | : | Certificate of Conformity |

This type of rigging screw meets the requirement as laid down in the Dutch, British, American and other dock regulations. Deliverable with two securing nuts or plates upon request. Custom design screws can be constructed in any size and capacity. Rigging screws are supplied with trapezium thread.

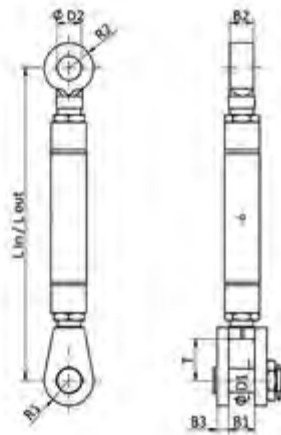
Proof Load Certificate on request.

Non-standard sizes or custom products available on request.

Only with additional locking device suitable for lifting.

(On request available)

Standard supplied with two securing nuts. This type of rigging screw meets the requirements as laid down in the Dutch, British, American and other Dock regulations.



| Trap. | Article number | SWL | | L IN | L OUT | B1 (mm) | B3 (mm) | T (mm) | D1 (mm) | R1 (mm) | B2 (mm) | R2 (mm) | D2 (mm) |
|---------|--------------------------|------|------|------|-------|------------|------------|-----------|------------|------------|------------|------------|------------|
| mm | Painted RAL 5013 blue | tons | kN | mm | mm | Jaw | | | | | Stud Eye | | |
| 55 x 8 | HDRS013,5EJ | 13,5 | 133 | 890 | 1215 | 55 | 20 | 120 | 51 | 60 | 50 | 60 | 53 |
| 65 x 8 | HDRS017EJ | 17 | 176 | 965 | 1315 | 65 | 28 | 130 | 63 | 70 | 55 | 70 | 65 |
| 70 x 8 | HDRS025EJ | 25 | 245 | 1030 | 1360 | 76 | 30 | 145 | 70 | 70 | 70 | 70 | 72 |
| 75 x 8 | HDRS030EJ | 30 | 294 | 1090 | 1460 | 80 | 35 | 160 | 72 | 75 | 70 | 75 | 74 |
| 80 x 8 | HDRS035EJ | 35 | 343 | 1175 | 1575 | 90 | 40 | 175 | 80 | 85 | 80 | 85 | 82 |
| 90 x 8 | HDRS045EJ | 45 | 442 | 1235 | 1715 | 100 | 45 | 175 | 90 | 95 | 90 | 95 | 93 |
| 100 x 8 | HDRS055EJ | 55 | 540 | 1325 | 1835 | 110 | 50 | 175 | 100 | 105 | 100 | 105 | 103 |
| 110 x 8 | HDRS070EJ | 70 | 687 | 1435 | 1985 | 110 | 55 | 175 | 108 | 115 | 100 | 115 | 111 |
| 120 x 8 | HDRS085EJ | 85 | 834 | 1540 | 2175 | 130 | 75 | 175 | 127 | 135 | 120 | 135 | 130 |
| 130 x 8 | HDRS100EJ | 100 | 981 | 1615 | 2345 | 140 | 90 | 175 | 140 | 145 | 130 | 145 | 143 |
| 140 x 8 | HDRS120EJ | 120 | 1177 | 1740 | 2335 | 155 | 90 | 190 | 152 | 170 | 140 | 170 | 155 |
| 160 x 8 | HDRS160EJ | 160 | 1570 | 1865 | 2465 | 170 | 100 | 210 | 178 | 190 | 160 | 190 | 181 |
| 180 x 8 | HDRS200EJ | 200 | 1962 | 2010 | 2630 | 190 | 110 | 250 | 190 | 220 | 170 | 200 | 193 |
| 200 x 8 | HDRS250EJ | 250 | 2453 | 2190 | 2860 | 210 | 120 | 280 | 250 | 260 | 190 | 260 | 253 |



LIGHT TYPE SNATCHBLOCK

| | | |
|------------------------|---|--|
| Material | : | Mild steel |
| Safety Factor | : | 4 times |
| Finish | : | Painted |
| Temperature Range | : | -20 °C up to +180 °C |
| Standard Certification | : | Certificate of Conformity Proofload Certificate |



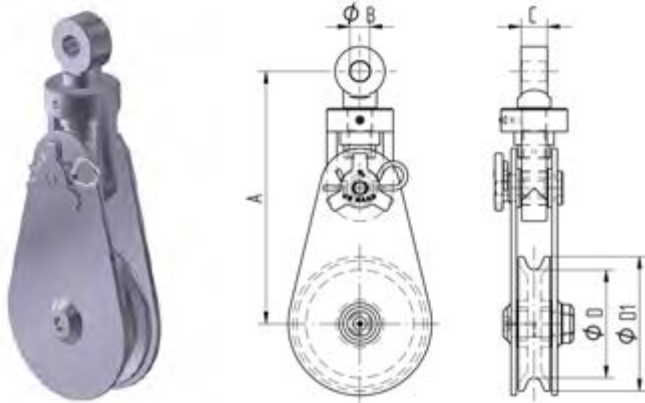
Sheaves with roller bearing on request.



Groove size can be modified on request for customized rope sizes.



Available with shackle



| Type | SWL | Rope size | Line pull | Suitable for Shackle | A | ØB | C | ØD | ØD1 | Weight |
|--------|------|-----------|-----------|----------------------|-----|------|----|-----|-----|--------|
| | tons | mm | tons | | mm | | | | | kg ± |
| H41903 | 3.25 | 8 - 10 | 1.625 | 3.25 | 188 | 20.5 | 25 | 56 | 75 | 4 |
| H41905 | 4.75 | 11 - 14 | 2.375 | 4.75 | 250 | 24 | 30 | 86 | 114 | 9 |
| H41906 | 8.5 | 18 - 20 | 4.25 | 8.5 | 356 | 30 | 40 | 112 | 152 | 19 |
| H41908 | 8.5 | 18 - 20 | 4.25 | 8.5 | 381 | 30 | 40 | 163 | 203 | 24 |
| H41910 | 9.5 | 18 - 20 | 4.75 | 9.5 | 406 | 34 | 44 | 214 | 254 | 30 |
| H41912 | 9.5 | 18 - 20 | 4.75 | 9.5 | 446 | 34 | 44 | 265 | 305 | 39 |
| H41914 | 12 | 18 - 20 | 6 | 12 | 516 | 37 | 48 | 305 | 355 | 50 |
| H41916 | 13.5 | 22 - 25 | 6.75 | 13.5 | 645 | 42 | 54 | 356 | 406 | 93 |
| H41918 | 17 | 22 - 25 | 8.5 | 17 | 690 | 44 | 57 | 408 | 458 | 112 |

HEAVY TYPE SNATCHBLOCK



| | | |
|------------------------|---|--|
| Material | : | Mild steel |
| Safety Factor | : | 4 times |
| Finish | : | Painted |
| Temperature Range | : | -20 °C up to +180 °C |
| Standard Certification | : | Certificate of Conformity Proofload Certificate |



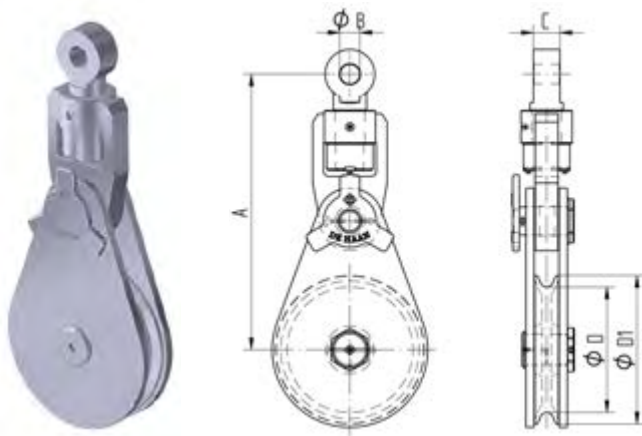
Sheaves with roller bearing on request.



Groove size can be modified on request for customized rope sizes.



Available with shackle



| Type | SWL | Rope size | Line pull | Suitable for Shackle | A | ØB | C | ØD | ØD1 | Weight |
|--------|------|-----------|-----------|----------------------|------|-----|-----|-----|------|--------|
| | tons | mm | tons | | mm | | | | | kg ± |
| H43106 | 17 | 22 - 25 | 8.5 | 17 | 490 | 44 | 57 | 110 | 150 | 49 |
| H43108 | 25 | 25 - 28 | 12.5 | 25 | 602 | 53 | 70 | 150 | 200 | 78 |
| H43110 | 25 | 28 - 32 | 12.5 | 25 | 632 | 53 | 70 | 190 | 250 | 92 |
| H43112 | 25 | 28 - 32 | 12.5 | 25 | 662 | 53 | 70 | 240 | 300 | 112 |
| H43114 | 25 | 28 - 32 | 12.5 | 25 | 692 | 53 | 70 | 290 | 350 | 127 |
| H43118 | 35 | 32 - 38 | 17.5 | 35 | 835 | 60 | 80 | 380 | 450 | 213 |
| H43120 | 35 | 32 - 38 | 17.5 | 35 | 865 | 60 | 80 | 430 | 500 | 243 |
| H43124 | 35 | 32 - 38 | 17.5 | 35 | 925 | 60 | 80 | 535 | 605 | 308 |
| H43224 | 55 | 38 - 42 | 27.5 | 55 | 1040 | 73 | 100 | 520 | 605 | 449 |
| H43230 | 85 | 44 - 48 | 42.5 | 85 | 1212 | 85 | 120 | 630 | 750 | 938 |
| H43234 | 120 | 50 - 55 | 60 | 120 | 1327 | 100 | 140 | 740 | 860 | 1319 |
| H43236 | 150 | 60 - 70 | 75 | 150 | 1427 | 113 | 160 | 760 | 910 | 1600 |
| H43242 | 200 | 75 - 85 | 100 | 200 | 1630 | 135 | 170 | 870 | 1060 | 2285 |
| H43246 | 250 | 88 - 93 | 125 | 250 | 1785 | 145 | 190 | 970 | 1170 | 3015 |



SNATCHBLOCK WITH SAFETY WINDOW



| | | |
|------------------------|---|--|
| Material | : | Mild steel |
| Safety Factor | : | 4 times |
| Finish | : | Painted |
| Temperature Range | : | -20 °C up to +180 °C |
| Standard Certification | : | Certificate of Conformity Proofload Certificate |



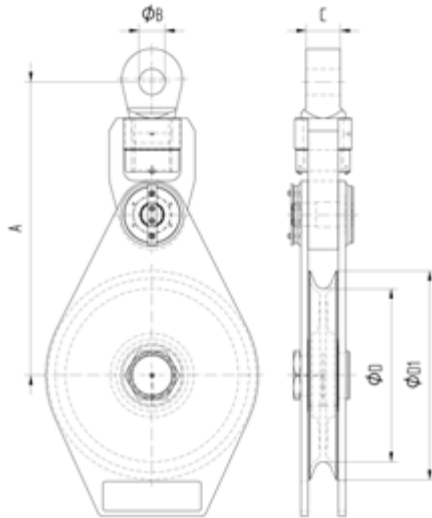
Sheaves with roller bearing on request.



Groove size can be modified on request for customized rope sizes.



Available with shackle



| Type | WLL | Rope size | Line pull | Suitable for Shackle | A | ØB | C | ØD | ØD1 | Weight |
|---------|------|-----------|-----------|----------------------|------|-----|-----|-----|------|--------|
| | tons | mm | tons | | mm | | | | | kg ± |
| SH43106 | 17 | 22 - 25 | 8.5 | 17 | 385 | 44 | 55 | 110 | 150 | 33 |
| SH43110 | 25 | 28 - 32 | 12.5 | 25 | 500 | 53 | 70 | 160 | 250 | 70 |
| SH43118 | 35 | 32 - 38 | 17.5 | 35 | 680 | 60 | 80 | 380 | 450 | 160 |
| SH43224 | 55 | 38 - 42 | 27.5 | 55 | 850 | 73 | 100 | 520 | 605 | 260 |
| SH43230 | 85 | 44 - 48 | 42.5 | 85 | 1020 | 85 | 120 | 640 | 760 | 484 |
| SH43234 | 120 | 50 - 55 | 60 | 120 | 1190 | 100 | 140 | 740 | 860 | 740 |
| SH43236 | 150 | 60 - 70 | 75 | 150 | 1320 | 113 | 160 | 760 | 910 | 992 |
| SH43242 | 200 | 75 - 85 | 100 | 200 | 1490 | 135 | 170 | 870 | 1060 | 1573 |
| SH43246 | 250 | 88 - 93 | 125 | 250 | 1645 | 145 | 190 | 970 | 1170 | 2097 |



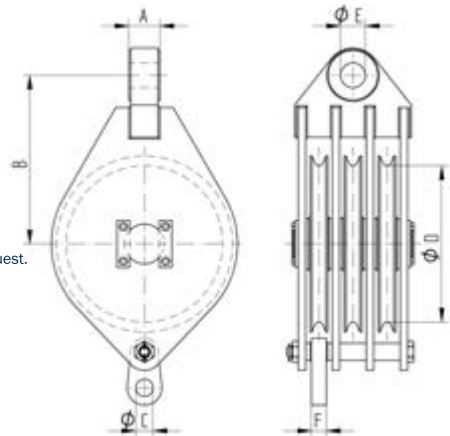
CONSTRUCTION BLOCK WITH EYE



| | | |
|------------------------|---|---|
| Safety Factor | : | 4 times |
| Finish | : | Painted |
| Temperature Range | : | -20 °C up to +180 °C (-40 °C on request) |
| Standard Certification | : | Certificate of Conformity Proof Load Certificate on request. |



Also available with shackle



SPECIFICATION & OPTIONS



Type of bearing

Type of bearing:
roller or bronze.



Size of wire

The size of the wire is
relevant for the groove and
the diameter (D/d-ratio)
of the sheaves.



Number of sheaves

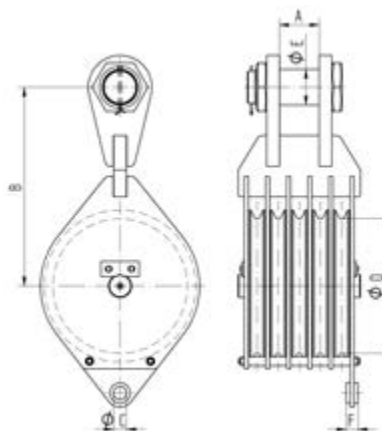
The number of sheaves per
product. This can be a
standard amount or one
available upon request.

SWL/WLL

Working Load Limit
(or Safe Working Load);
the maximum load
the relevant product
is allowed to lift.



| | | |
|------------------------|---|---|
| Safety Factor | : | 4 times |
| Finish | : | Painted |
| Temperature Range | : | -20 °C up to +180 °C (-40 °C on request) |
| Standard Certification | : | Certificate of Conformity Proof Load Certificate on request. |



SPECIFICATION & OPTIONS



Type of bearing

Type of bearing:
roller or bronze.



Size of wire

The size of the wire is
relevant for the groove and
the diameter (D/d-ratio)
of the sheaves.



Number of sheaves

The number of sheaves per
product. This can be a
standard amount or one
available upon request.

SWL/WLL

Working Load Limit
(or Safe Working Load);
the maximum load
the relevant product
is allowed to lift.





| | | |
|------------------------|---|--|
| Material | : | High tensile steel |
| Finish | : | Painted |
| Temperature Range | : | -20 °C up to +180 °C (-40 °C on request) |
| Standard Certification | : | Certificate of Conformity |



Several options for painting according ISO 12944 on request.

Special products available on request.

WIRE ROPE STOPPER

